



Final Distribution – Resi9 2025

Nikhil Bharadwaj

Final Distribution | Main functions

Distribute and control electrical energy to loads while ensuring protection

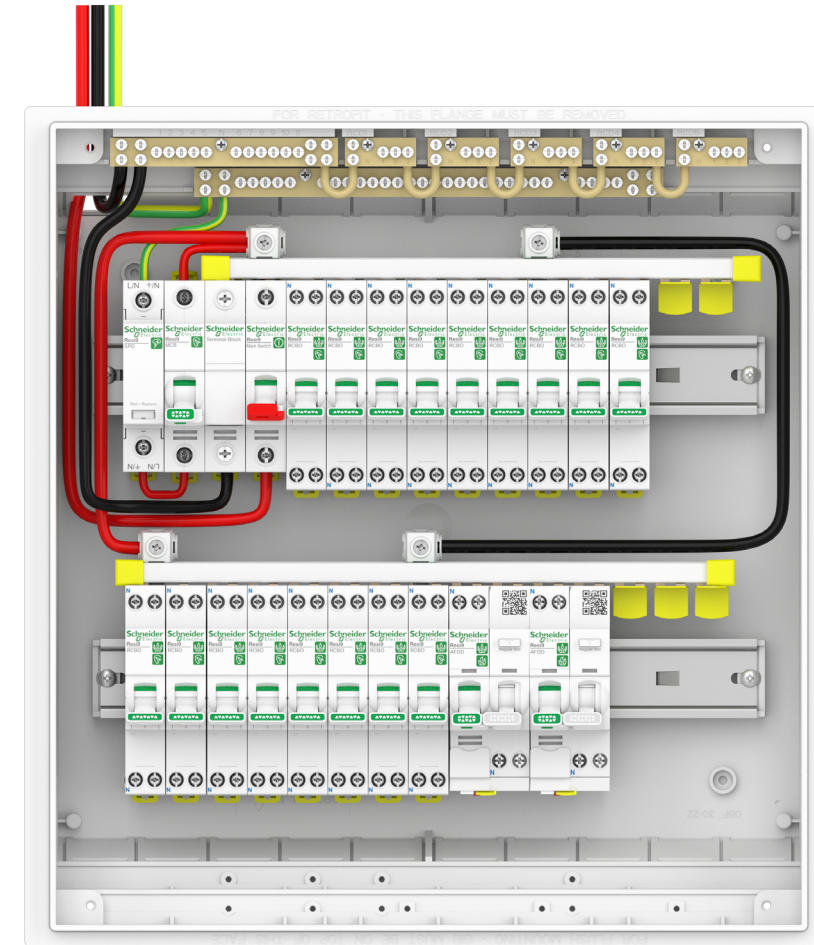
- Switch ON/OFF loads (Main Switch, Changeover Switch)
- Protect cables (MCB)
- Protect people (RCD)
- Protect cables and people (RCBO)
- Protect against fire (AFDD)
- Protect equipment (SPD)
- Control loads (Contactor)
- Monitor circuits (OF-SD,..)
- Measure power and energy (PowerTag)

Basic protection

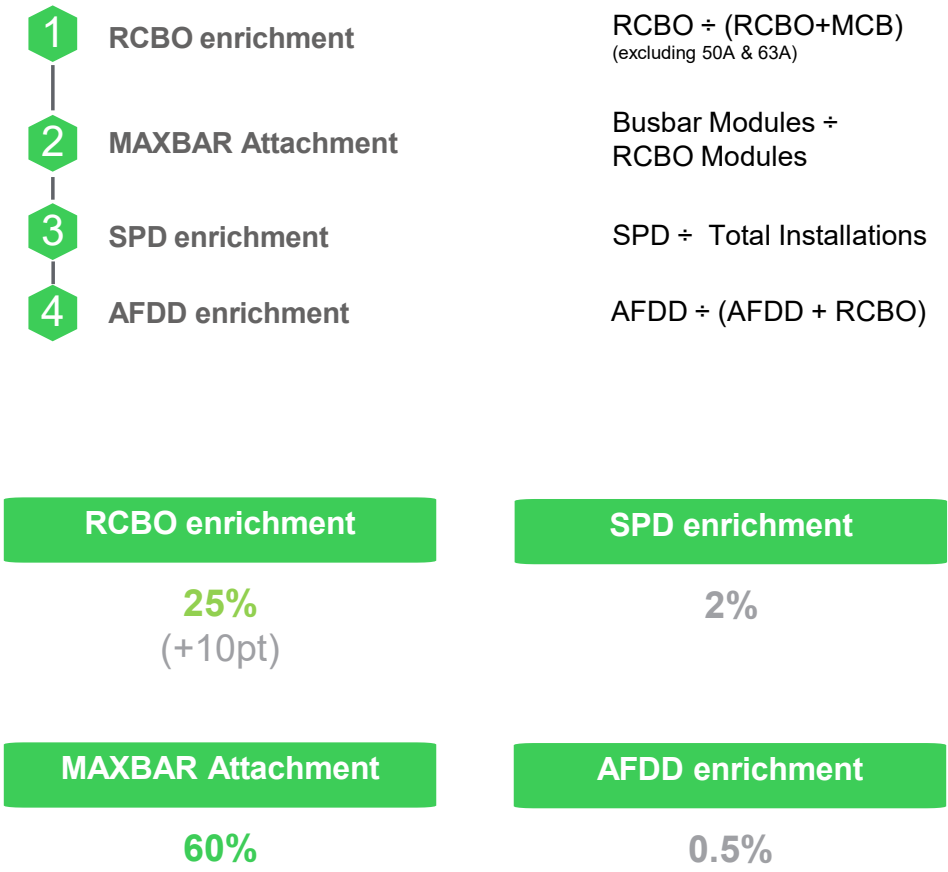
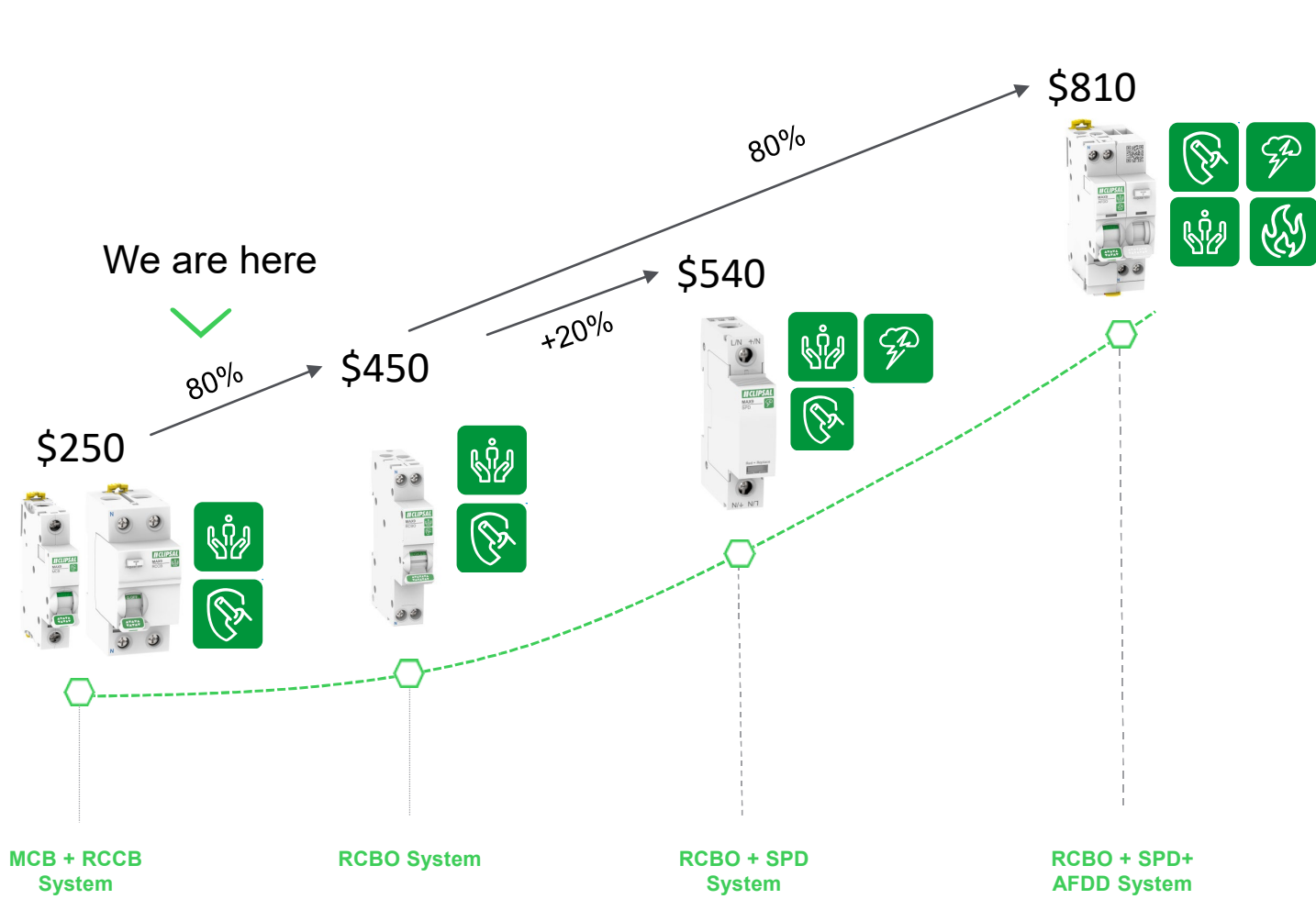
Advanced protection
(enrichment)

Connectivity enablers
(monitor + control)

in a safe and reliable manner through enclosures (plastic enclosures, meter boards,..) and distribution accessories (busbars, terminal links,..)



Opportunity | Enrichment is key to drive growth





Our Context

The Opportunity



**1 in 3 homes without RCD
Protection**

**\$600M opportunity for
electricians**



**Average home has \$15K
worth of appliances
exposed to surge risk**

**\$30M opportunity for
electricians**

The Electricians' Perspective



Switchboards are a source of pride for electricians

They aim to showcase their professionalism through neat & efficient installations



Evolution of technology & standards is confusing

Electricians find it hard to keep up



Explaining the need for switchboard upgrades to home owners is complex

Many resort to technical jargon & scare tactics

The Homeowners' Perspective



Homeowners don't think about circuit protection until it's broken

It's an 'out of mind, out of sight mentality'



Homeowners would rather invest in electrical upgrades they can interact with

Lighting & smart home are the most engaged electrical categories.



Circuit protection is too technical & complex to decipher

They find conversations with electricians difficult, leading to a lack of trust.

3 Steps to Winning in Circuit Protection



Engage electricians in a new offer that enhances their pride & professionalism

Join the Resi9 Generation



Keep electricians up-to-date on the latest technology & standards

Training Support



Bridge the communication gap between electricians & homeowners

Simple safety story
Pictograms
On-the-job tools

Typical layouts with RCCB + MCB vs RCBO installation

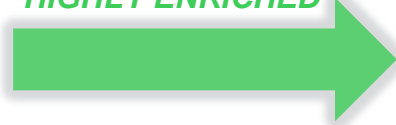
Number of circuits vary from 15-20 in a typical installation

From Switch + RCCB/MCBs system

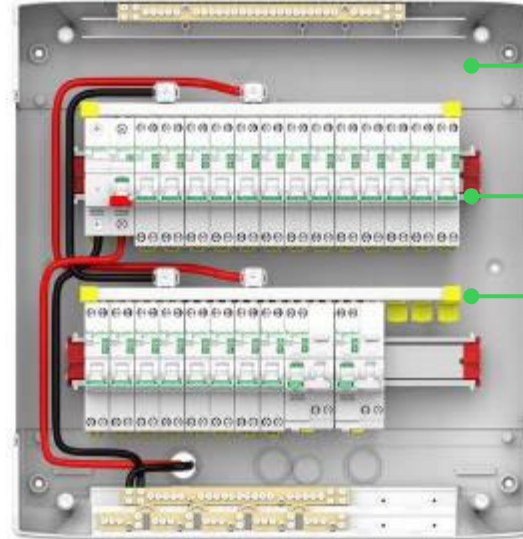


- Messy (more cables)
- High installation time
- No consistency in look & feel

HIGHLY ENRICHED



TO: Switch+ MCB +Slim RCBO + AFDD + SPD system



Resi9

Enclosure

+

Devices

+

System

Accessories

COMPLETE SYSTEM

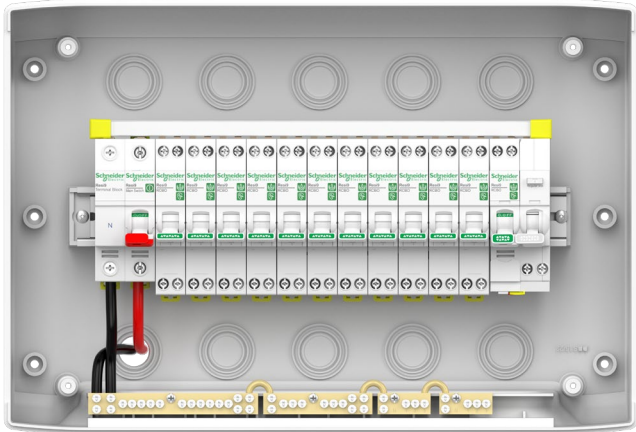
- ✓ Neat installation
- ✓ Quick connection with comb busbar (top feed)
- ✓ Consistent range look & feel

Life Is On

Schneider
Electric

Benefits of SLIM RCBOs for Electricians

Save time & money



Professionalism

- Neater & tidier installation
- Minimise number of cables on line side
- Less inconvenience for home-owner – Only 1 circuit trips in case of earth leakage fault.

Cost saving

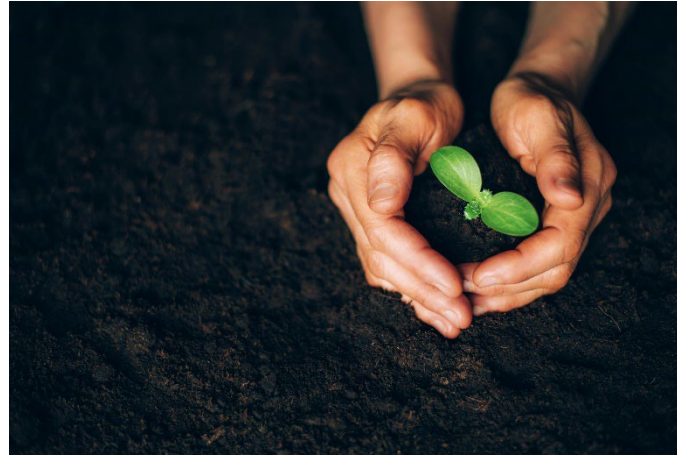
- Almost 50% less space needed in a typical switchboard
- Go to smaller board to save cost

Time saving

- Faster Installation with busbar
- Easier fault diagnosis – you can direct to the circuit that might have tripped due to earth leakage.

Benefits for wholesaler

Grow both topline & bottomline



Grow the size of pie

- Everyone fighting on bigger share of pie based on price.
- Grow the size of pie with RCBO enrichment
- Differentiate from other wholesalers by better segmenting the electricians.

Protect

- Highly enriched solution protects from cheap online players fighting on price.

Grow

- Increase topline by converting labour cost into product cost.
- Increase bottom line by increasing electrician spend.



Resi9

The Ultimate in Residential Circuit Protection

Resi9 - The ultimate in residential circuit protection



COMPLETE SOLUTION

Includes RCCB, MCB, RCBO, AFDD, SPD, 1-3P Main switches, Plastic enclosures and accessories.

EASE OF INSTALL

Larger terminal size for MCBs and Main switches

MAX PERFORMANCE

High electrical and mechanical endurance performance for all devices

MAX FLEXIBILITY

Option of top or bottom line-feeding for all devices*
Except 2 module RCBOs



EFFICIENCY

PEACE OF MIND

INNOVATION

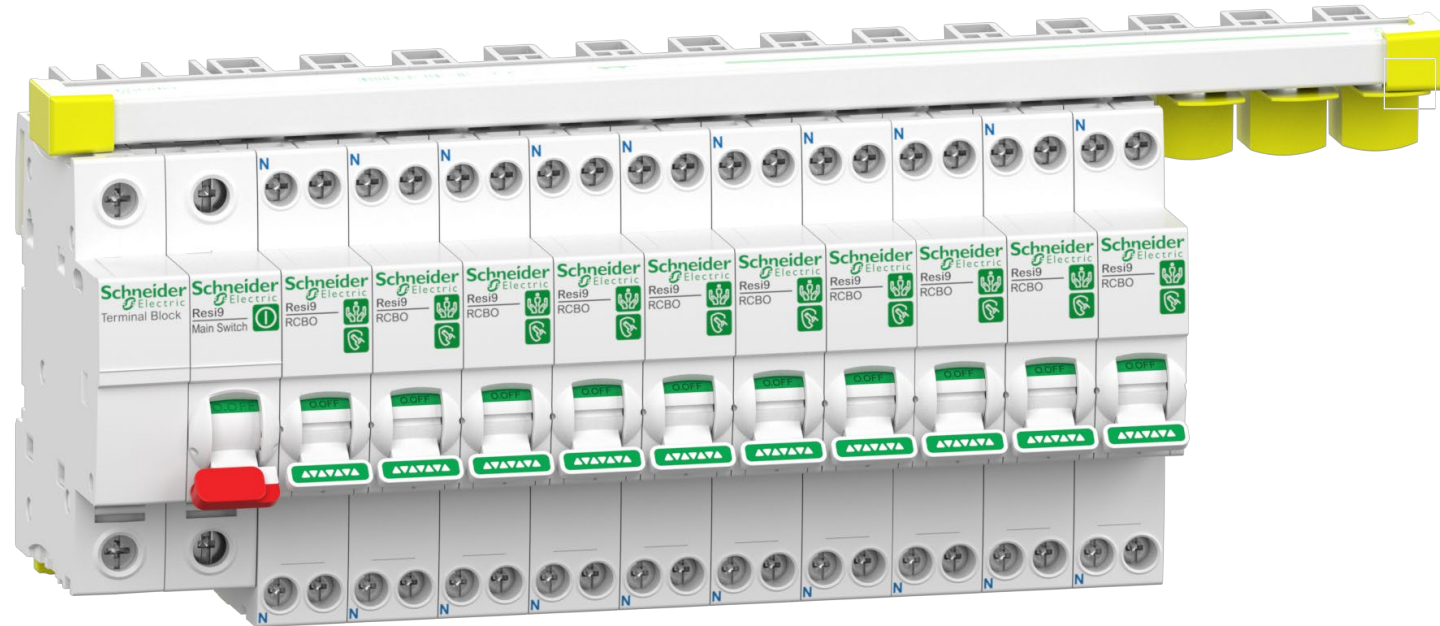
SIMPLICITY

SUPPORT

MAXBAR – Raising the bar

MAX PROFESSIONALISM

No cables for feeding RCBOs



MAX SPEED

Up to 2 times Faster when compared to RCCB+MCB method

MAX PERFORMANCE

100A rated system

MAX FLEXIBILITY

One busbar connects to main switch, all type of Resi9 RCBOs and AFDD



EFFICIENCY

PEACE OF MIND

INNOVATION

SIMPLICITY

SUPPORT

HEAD & SHOULDERS ABOVE REST

Future ready:

- Sustainable brown packaging
- Environment Data



Designed for NZ conditions:

- Operating temperature range from **-25 Deg C** to **70 Deg C** with derating.
- **Designed to last** – 20K mechanical endurance and 10K electrical endurance¹

1 – All devices except for RCCBs

GROW BUSINESS WITH INNOVATION

- AFDD (Arc Fault Detection Device)
 - Only 2 modules wide with MCB, RCD and AFDD function
- Surge Protection
 - With replaceable cartridge
 - Maximum discharge capacity of 40kA (8/20 μ s)

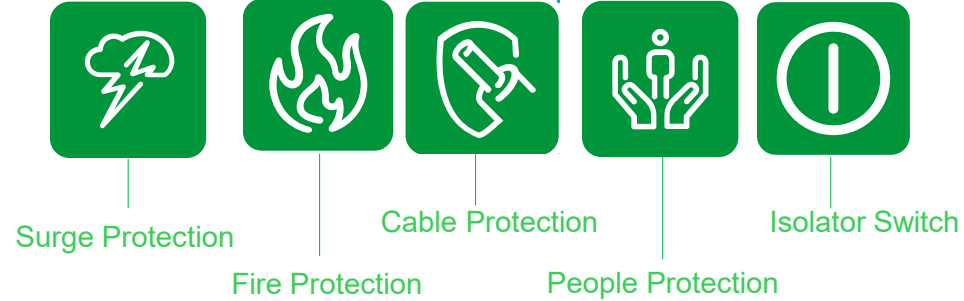


SIMPLIFY SAFETY



PICTOGRAMS

Help electricians easily explain safety devices to home-owner



Surge Protection

Fire Protection

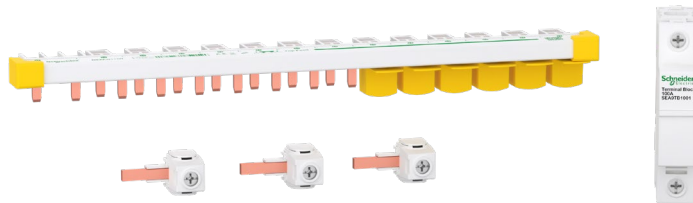
Cable Protection

People Protection

Isolator Switch

EASY TO STOCK

Busbar comes as kit with all it's accessories



QR CODE

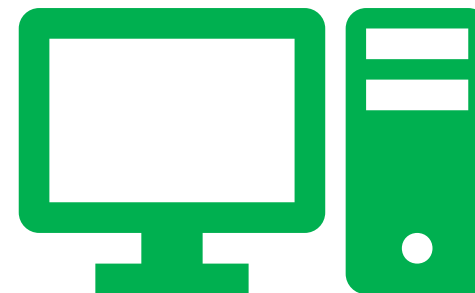
Simply scan QR code for all product info – specs, brochures, installation instructions, etc.



GOING BEYOND PRODUCTS



- Business growth training for electricians
- Electrician trainings on regulation/standard changes
- Training program for wholesaler staff in branches



- Digital tools:
 - Product Finder
 - Product Selector
 - 360-degree images
 - Videos



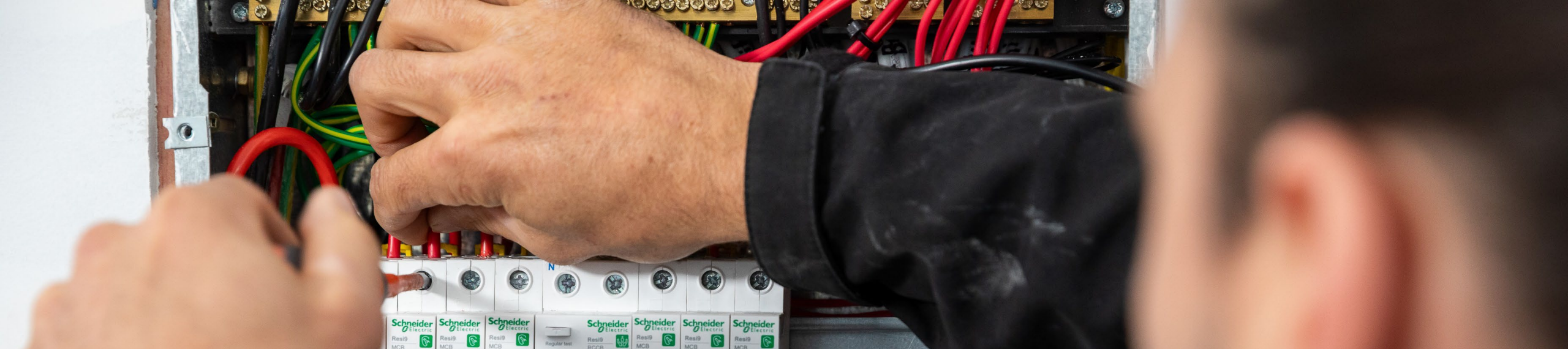
EFFICIENCY

PEACE OF MIND

INNOVATION

SIMPLICITY

SUPPORT



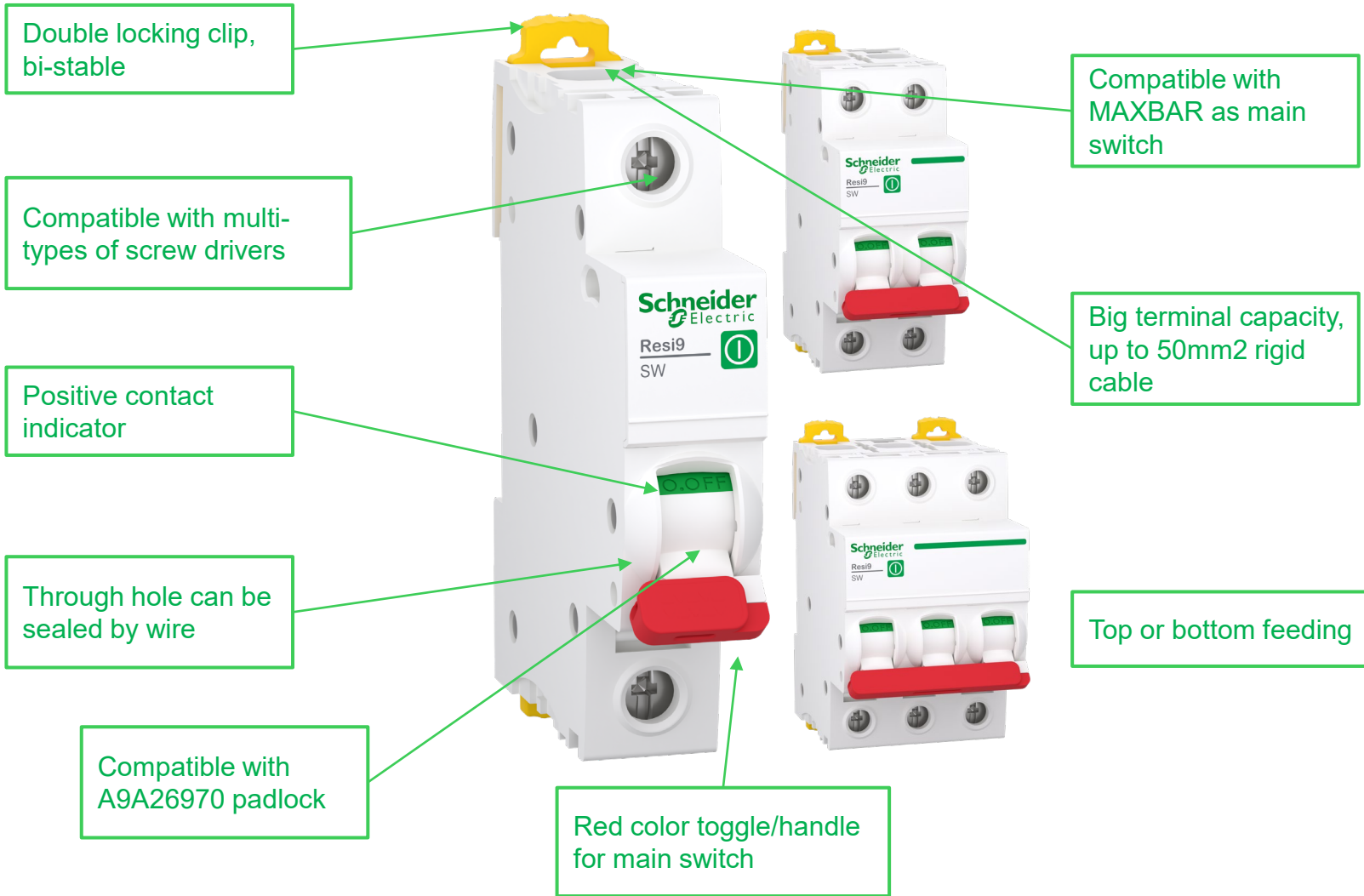
Detailed Features and Characteristics



Resi9 Catalog number format and legend

R9		D06		6		16	
Range		Product type		Number of poles		Rating (A)	
Meaning	Code	Meaning	Code	Meaning	Code	Meaning	Code
Resi9	R9	Slim RCBO	D06	1P	1	6A	06
		2 Mod RCBO	D08	2P	2	10A	10
		MCB	F06	3P	3	16A	16
		RCCB	R06	1P+N	6	20A	20
		Switch	S06			25A	25
		AFDD	TDB3			32A	32
						40A	40
						63A	63
						80A	80
						100A	91

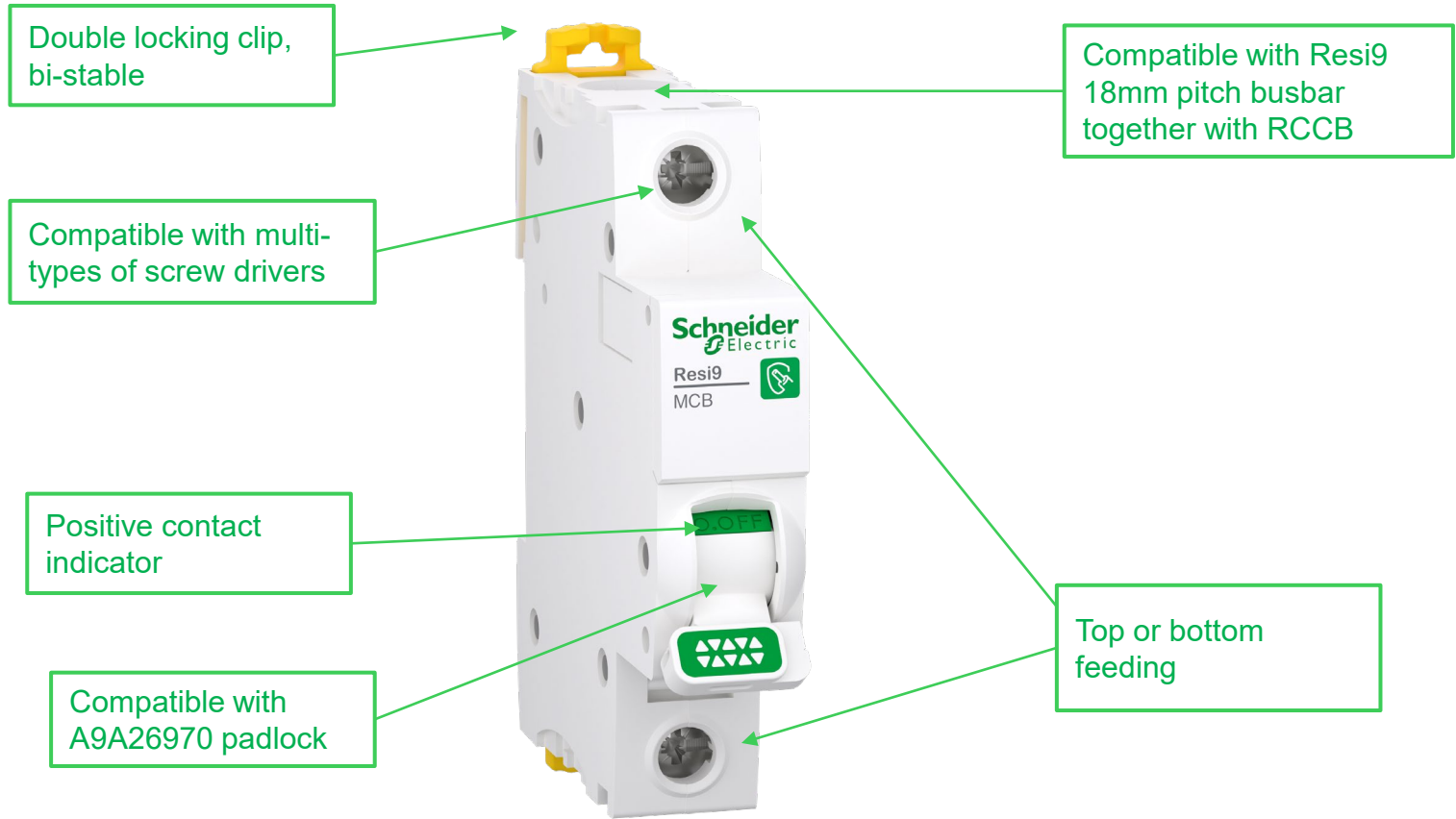
Main Switch



Main Features:

Standard	AS/NZS 60947.3
Quality Mark	RCM
Functions	*Isolation switch
Ue	230/400V~
Pole & Rating	1/2/3Pole 100A
Utilization Category	AC-22A
ME / EE	20000 / 10000 Cycles
Ui / Uimp	500V / 6kV
Operating Temp	-25°C to +70°C
Green Premium	YES

MCB



Main Features:	
Standard	AS/NZS 60898.1
Quality Mark	RCM
Functions	*Overcurrent protection
Ue	230/400V~
Pole & Rating	1Pole 6 to 40A
Breaking Capacity	6000A
ME / EE	20000 / 10000 Cycles
Ui / Uimp	500V / 4kV
Operating T	-25°C to +70°C with derating
Green Premium	YES

RCCB



Double locking clip, bi-stable

Compatible with multi-types of screw drivers

Compatible with Resi9 18mm pitch busbar together with MCB

Positive contact indicator

Compatible with A9A26970 padlock

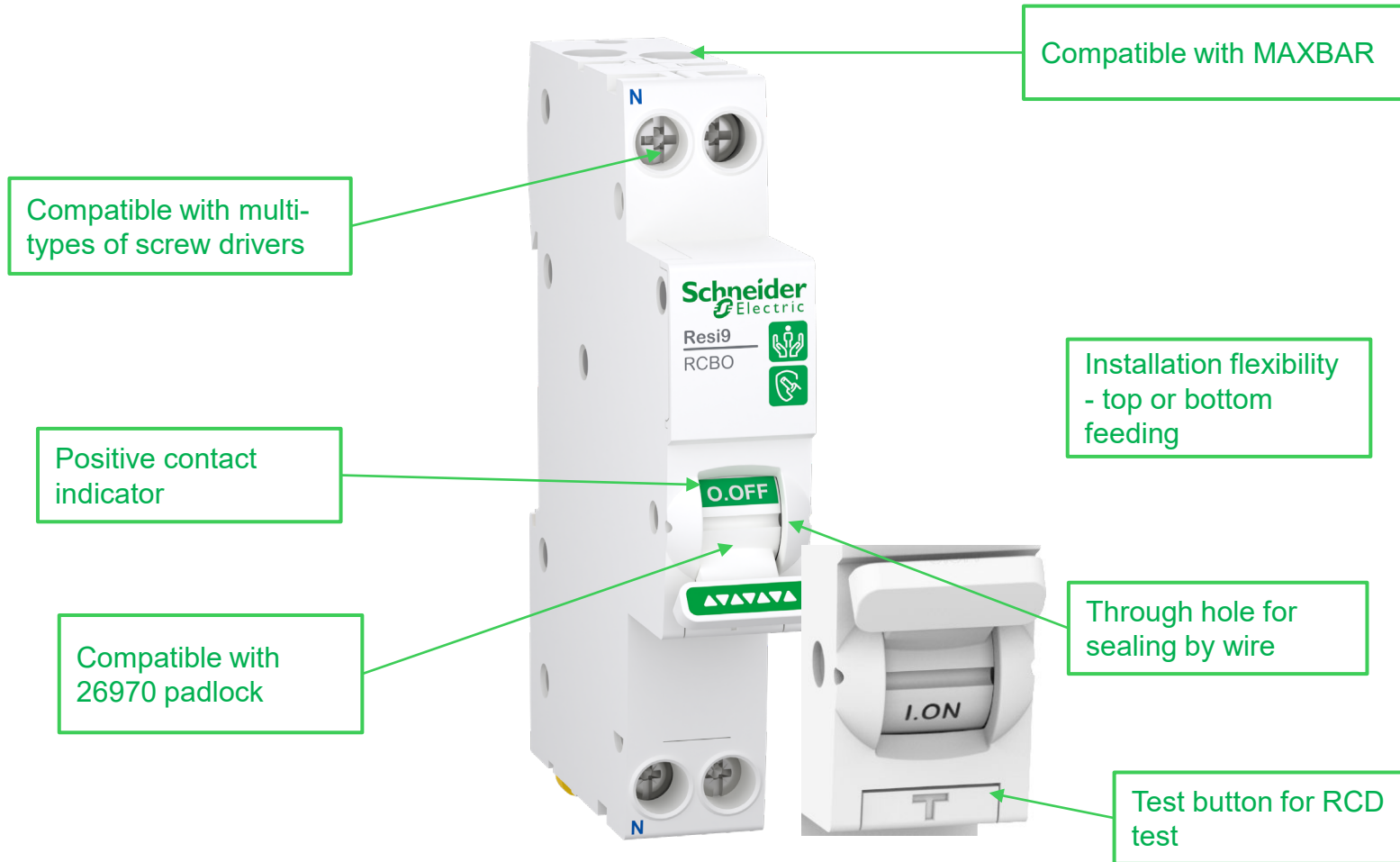


Top or bottom feeding

Main Features:

Standard	AS/NZS 61008.1
Quality Mark	RCM
Functions	*Earth leakage protection
Ue	230V~
Pole & Rating	2P - 40/63A
Breaking Capacity	6000A with Resi9 MCB
RCD Type	Type A
Sensitivity	30mA no-delay
ME / EE	10000 / 4000 Cycles
Ui / Uimp	440V / 4kV
Operating T	-25°C to +70°C with derating
Green Premium	YES

RCBO 1P+N - SLIM 1-Module



Main Features:	
Standard	AS/NZS 61009.1
Quality Mark	RCM
Functions	*Overcurrent protection *Earth leakage protection
Ue	230V~
Pole & Rating	1P+N 6 to 32A
Breaking Capacity	6000A
RCD Type	Type A
Sensitivity	30mA no-delay
ME / EE	20000 / 10000 Cycles
Ui / Uimp	440V / 4kV
Operating T	-25°C to +70°C with derating
Green Premium	YES

RCBO 1P+N – 2-Modules

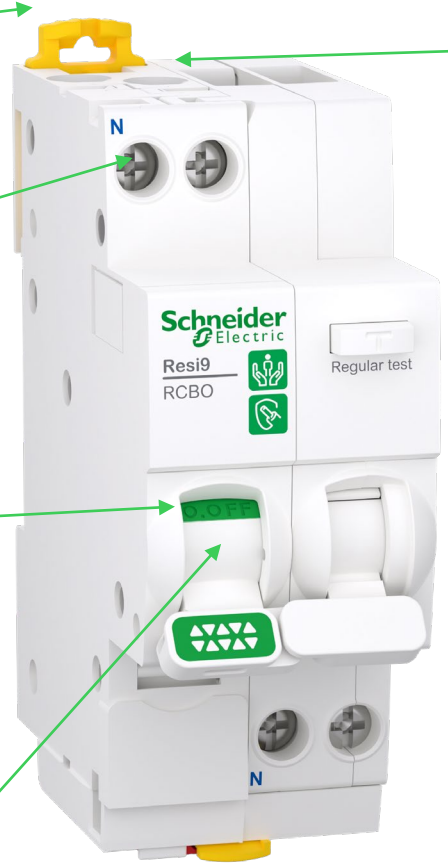


Double locking clip, bi-stable

Compatible with multi-types of screw drivers

Positive contact indicator

Compatible with A9A26970 padlock



Compatible with MAXBAR

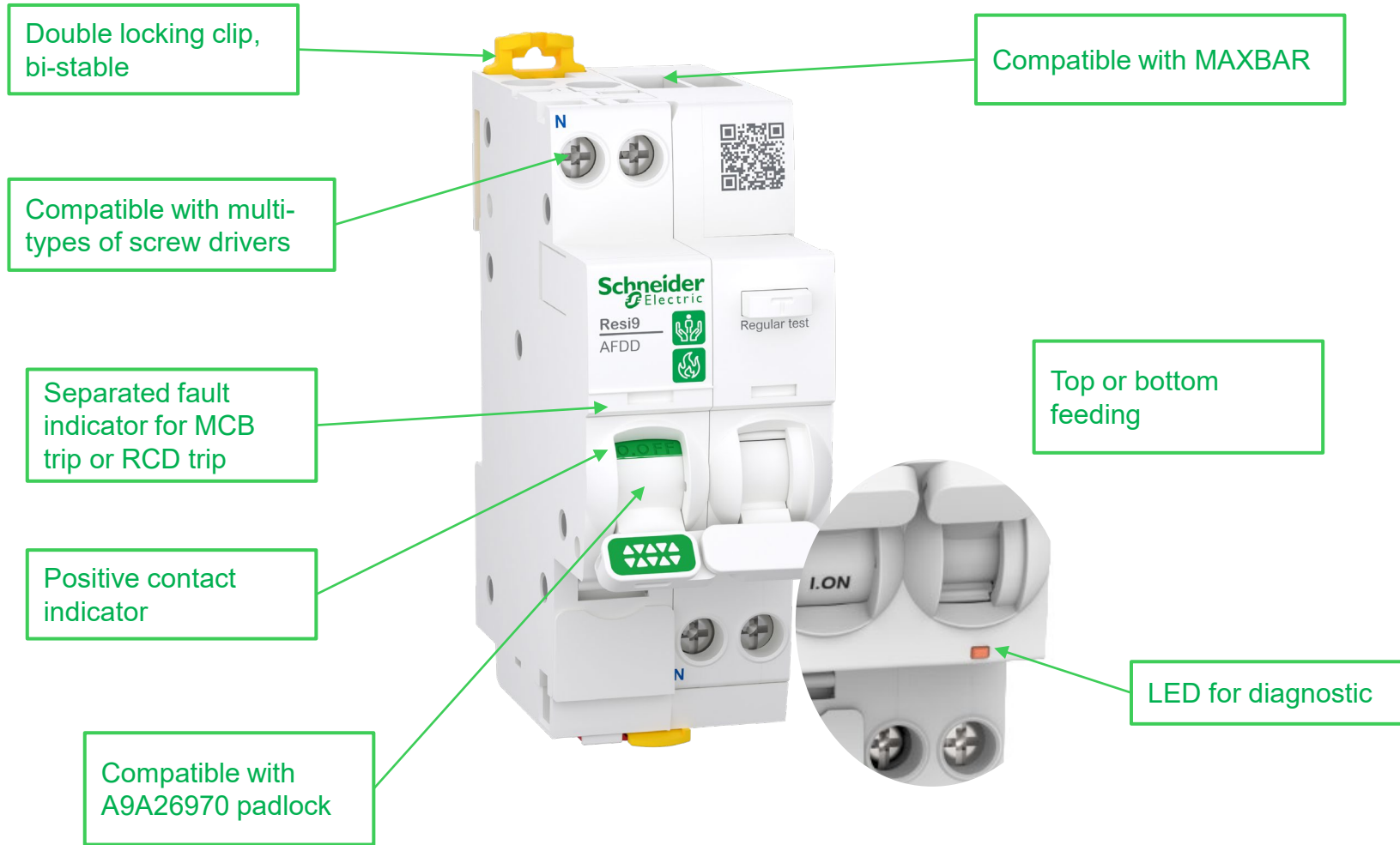
Top feeding only

Main Features:

Standard	AS/NZS 61009.1
Quality Mark	RCM
Functions	*Overcurrent protection *Earth leakage protection
Ue	230V~
Pole & Rating	1P+N 10 to 40A
Breaking Capacity	6000A
RCD Type	Type A
Sensitivity	30mA no-delay
ME / EE	20000 / 10000 Cycles
Ui / Uimp	440V / 4kV
Operating T	-25°C to +70°C with derating
Green Premium	YES



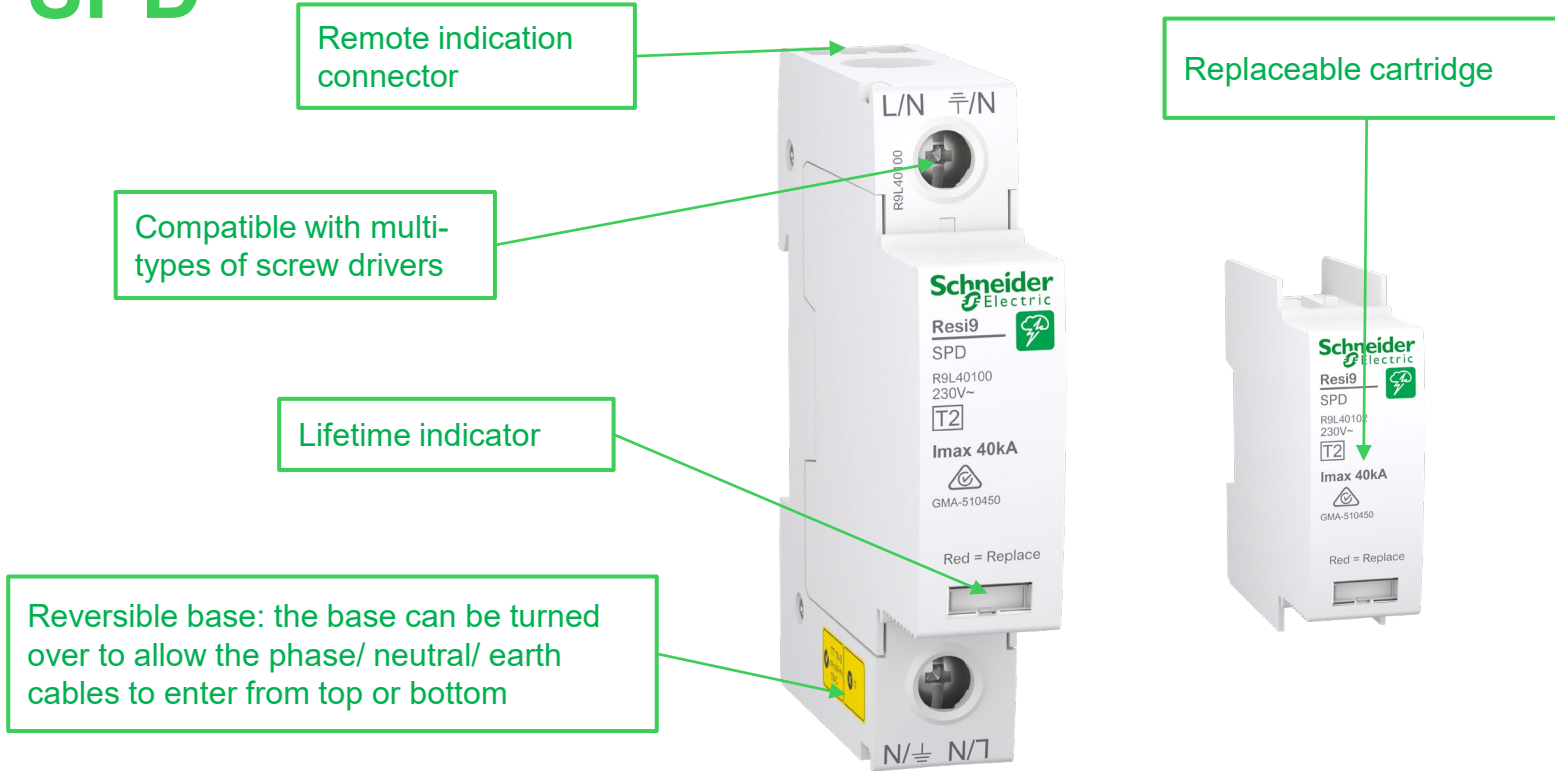
AFDD



Main Features:

Standard	AS/NZS 61009.1 IEC 62606
Quality Mark	RCM
Functions	*Overcurrent protection *Earth leakage protection *Arc fault protection *Over-voltage protection
Ue	230V~
Pole & Rating	1P+N 6 to 25A
Breaking Capacity	6000A
RCD Type	Type A
Sensitivity	30mA no-delay
ME / EE	20000 / 10000 Cycles
Ui / Uimp	440V / 4kV
Operating T	-25°C to +70°C with derating
Green Premium	YES

SPD



Main Features:

Standard	IEC/EN 61643-11
Quality Mark	RCM
Functions	*Surge protection
Ue	230V~
Pole	1Pole
In / Imax	15kA / 40kA
SPD Class	Class II
Uc	350V~
Up	≤1.6KV
Iscrr	*50kA with fuse *10kA with Resi9 MCB
Operating T	-25°C to +70°C
Green Premium	YES

R9		L40		1		00	
Range		Product type		Number of poles		Description	
Meaning	Code	Meaning	Code	Meaning	Code	Meaning	Code
Resi9	R9	SPD 40kA	L40	1P	1	Device	00
						Replacement cartridge	02

Resi9 Consumer Switchboards



Surface Mount
 1 row 15 mods
 2 row 30 mods
 3 row 45 mods
 4 row 60 mods



Flush Mount
 1 row 10 mods
 1 row 15 mods
 2 row 30 mods
 3 row 45 mods
 4 row 60 mods



R9		H		SB		6		6		16	
Range		Category		Sub category		Number of rows		Number of modules		Mounting	
Meaning	Code	Meaning	Code	Meaning	Code	Meaning	Code	Meaning	Code	Meaning	Code
Resi9	R9	Enclosures	H	Mini enclosure	ME	1 Row	1	Modules per row	02	Surface	S
			"	Switch board	SB	2 Row	2	Modules per row	04	Flush	F
		Coming soon	"	Meter board	MB	3 Row	3	Modules per row	06	Flush & deep	FD
		Coming soon	"	Data board	DB	4 Row	4	Modules per row	10	Flush & wide	FW
								Modules per row	15	Flush, deep & wide	X

Resi9 Consumer Switchboards: Features



Surface Mount

135 mm Space b/n the DIN

Reversible back box

Double Door

Multiple Knockouts

NE Bars provided

Space at side of DIN rail

Wide Range up to 60 mods

Hinge improvement



Flush Mount

Metal Back Plate Option



To suit the wiring regulation AS/NZS 3000 with WSX3 protection



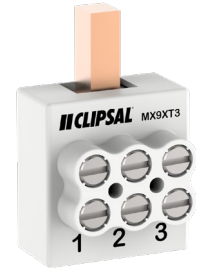
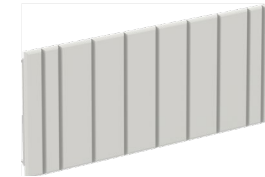
Pole filler, pin type busbar & Circuit labels provided

Main characteristics	Type 2
Rated Current	100A
Rated voltage	230/ 400 V
Rated Insulation voltage	500 V
IP Rating	IP4X
IK Rating	IK07
Color	RAL9003 White
Space between DIN rails	135mm
Isolation Class	2
Pole filler supplied	8 Mod – 24 Mod
Green label supplied	1 or 2 sheets
Compliance to Distribution boards standard	AS/NZS 61439-3
Supports the Compliance to Wiring regulations	AS/NZS 3000

Life Is On



Resi9 Enclosures – Installation Accessories



Terminal Block

Spare Terminal Block to Distribute Neutral Or Line between rows

Pin Type busbar

Busbars to connect to RCCB/MCB circuits

Circuit Labels

Circuit identification labels

Pole Filler

Plastic plates to cover unused poles and keep IP2X protection

Extra Terminal Lugs

Additional Terminal bar to distribute Neutral

R9		H		SB		6		6	
Range		Category		Sub category		Number of rows		Number of modules	
Meaning	Code	Meaning	Code	Meaning	Code	Meaning	Code	Meaning	Code
Resi9	R9	Accessories	A	Door assembly	DA	1 Row	1	Modules	04
			"	Neutral bar	NB	2 Row	2	Modules	08
			"	Pole filler	PF	3 Row	3	Modules per row	10
						4 Row	4	Modules per row	15
			"	Earth conductor tag	ECT				
			"	Circuit identification label	CIL				

MAXBAR



Supplied as a complete kit for ease of storage and to minimize forgotten components

Available with or without a Neutral Terminal Block. NTB - for rows with main switch

Available in 15 module to suit Resi9 enclosures

End caps

18mm pitch for NTB and Main Switch connection

9mm pitch busbar for slim and 2 mod RCBO as well as AFDD

RMXPC1 connectors supplies in kit for multi row cable connections

Tooth caps

Neutral Terminal Block (NTB) – Solid link module to supply busbar with neutral. Usually used on row with main switch

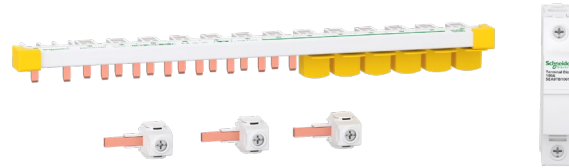
Main Features		Busbar & N Block	
Rated Current		100A	
Rated voltage		230 V	
Rated Insulation voltage		500 V	
IP Rating		IP2X with Tooth caps	

R9		X		PN		1		15		N	
Range		Category		Type		Number of rows		Number of modules		Neutral terminal block	
Meaning	Code	Meaning	Code	Meaning	Code	Meaning	Code	Meaning	Code	Meaning	Code
Resi9	R9	Busbar	X	Pin type busbar (18mm)	PH	1 Row	1	Modules per row	15	With Neutral terminal block	N
			"	Phase neutral busbar - MAXBAR (9mm)	PN						

Busbar Selection Chart for Resi9 devices

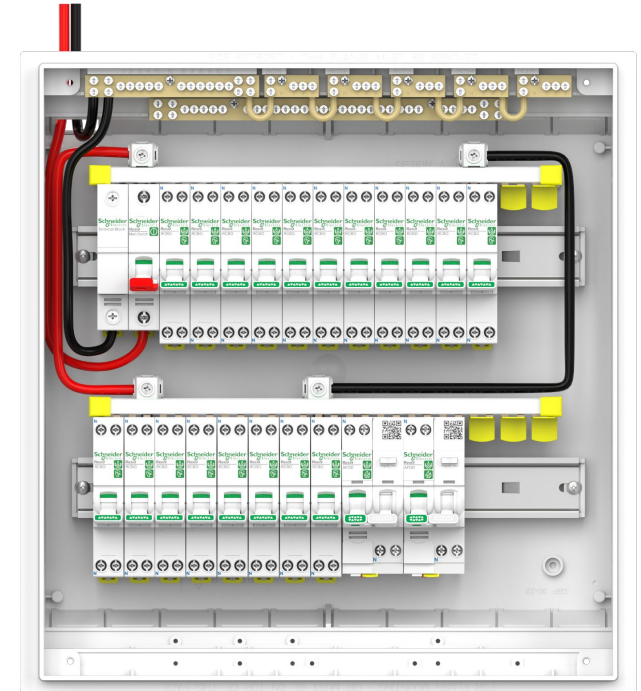
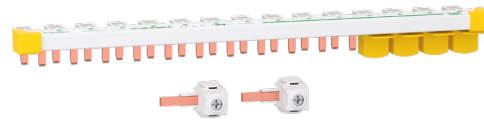
MAXBAR for Row with Main Switch

For installation in all single row enclosure or first row in multirow enclosures with main switch. - **R9XPN115N**



MAXBAR for Row without Main Switch

For installation in second row of multirow row enclosures without main switch - **R9XPN115**



Busbar selection chart for Resi9 Devices

Selection

Connection Type	Protection method	Pitch	Main switch connected busbar	Top or bottom feed	12 Mod	15 Mod	24 Mod
Phase only	RCCB/MCB and MCB only	18mm	NA	Both		R9XPH115	
Phase + Neutral	Slim RCBO and 2 Mod RCBO/AFDD	9mm	Yes	Top		R9XPN115N	
Phase + Neutral	Slim RCBO and 2 Mod RCBO/AFDD	9mm	No	Top		R9XPN115	
Phase + Neutral	Slim RCBO	9mm	No	Bottom	A9XPH612		A9XPH624

Life Is On

Schneider Electric

MCB/RCCB to RCBO conversion guide



RCCB/MCB to RCBO conversion guide

RCCB Ref	+	MCB Ref	=	Equivalent RCBO Ref	RCBO Ref Description	
R9R06240 R9R06263		R9F06106		R9D06606	Resi9 SLIM RCBO C 6A 1PN 6kA 30mA, Type A	
		R9F06110		R9D06610	Resi9 SLIM RCBO C 10A 1PN 6kA 30mA, Type A	
		R9F06116		R9D06616	Resi9 SLIM RCBO C 16A 1PN 6kA 30mA, Type A	
		R9F06120		R9D06620	Resi9 SLIM RCBO C 20A 1PN 6kA 30mA, Type A	
		R9F06125		R9D06625	Resi9 SLIM RCBO C 25A 1PN 6kA 30mA, Type A	
		R9F06132		R9D06632	Resi9 SLIM RCBO C 32A 1PN 6kA 30mA, Type A	
		R9F06140		R9D08640	Resi9 2MOD RCBO C 40A 1PN 6kA 30mA Type A	
	DOM16695 DOM16696		DOM11375		R9D06606	Resi9 SLIM RCBO C 6A 1PN 6kA 30mA, Type A
			DOM11376		R9D06610	Resi9 SLIM RCBO C 10A 1PN 6kA 30mA, Type A
			DOM11377		R9D06616	Resi9 SLIM RCBO C 16A 1PN 6kA 30mA, Type A
		DOM11378		R9D06620	Resi9 SLIM RCBO C 20A 1PN 6kA 30mA, Type A	
		DOM11379		R9D06625	Resi9 SLIM RCBO C 25A 1PN 6kA 30mA, Type A	
		DOM11380		R9D06632	Resi9 SLIM RCBO C 32A 1PN 6kA 30mA, Type A	
		DOM11381		R9D08640	Resi9 2MOD RCBO C 40A 1PN 6kA 30mA Type A	

Compatible busbars for Resi9 RCBOs and AFDDs:

R9XPN115N	Resi9 1PN busbar 15M with NTB and accssories for row with main switch
R9XPN115	Resi9 1PN busbar 15M with accssories for row without main switch

RESI9 | THE ULTIMATE IN RESIDENTIAL CIRCUIT PROTECTION



Resi9 Meter board & Data board

Nikhil BHARADWAJ



MARKET CONTEXT

Home electrification is here and is likely to continue to increase

As of Jan 2025, natural gas reserves have reduced by 27% compared to last year

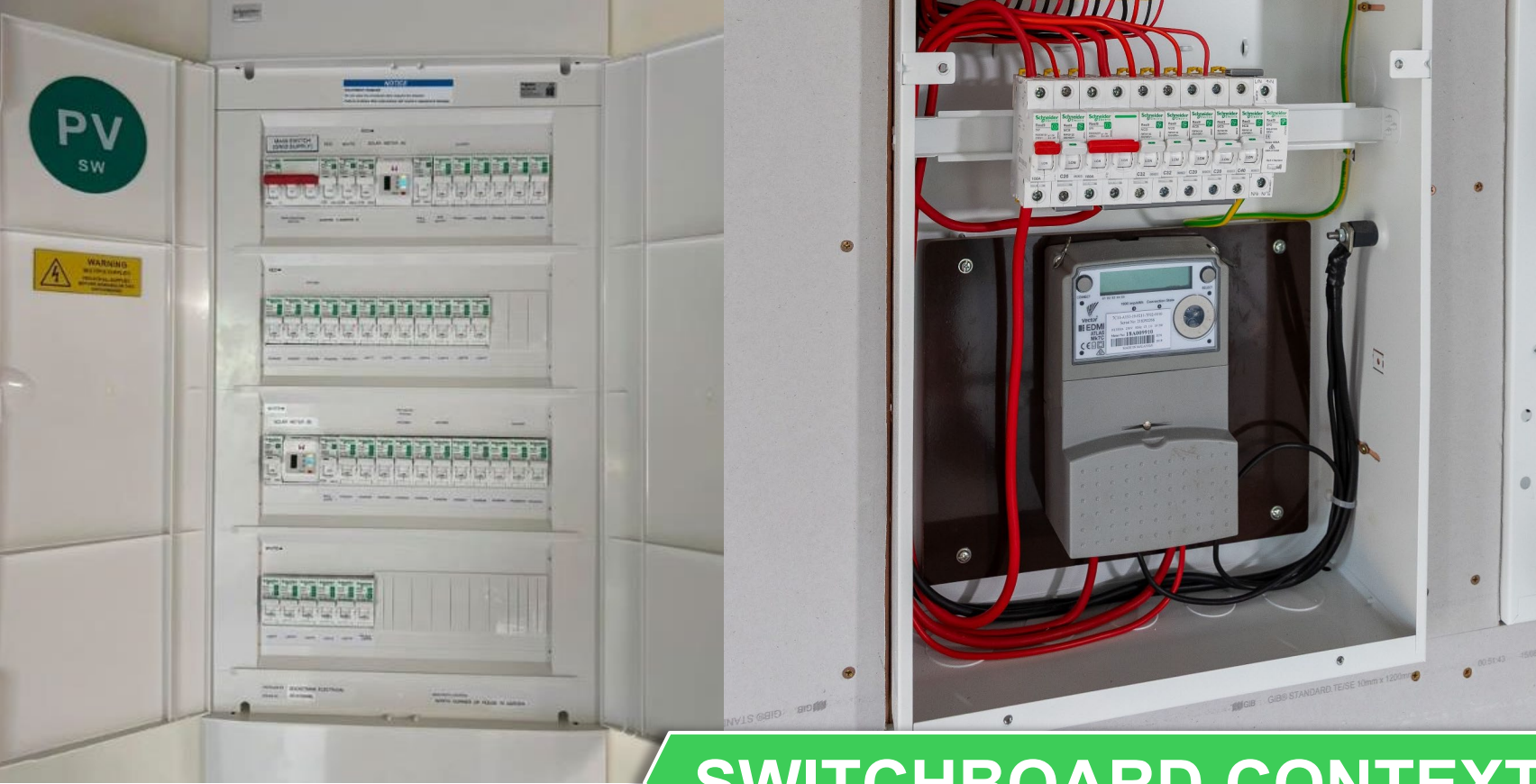
Source: Ministry of Business, Innovation and Employment

110K Electric Vehicles now registered in New Zealand

Source: Drive Electric, Market Statistics

Number of New Zealand homes with solar has increased by 23% over the past year

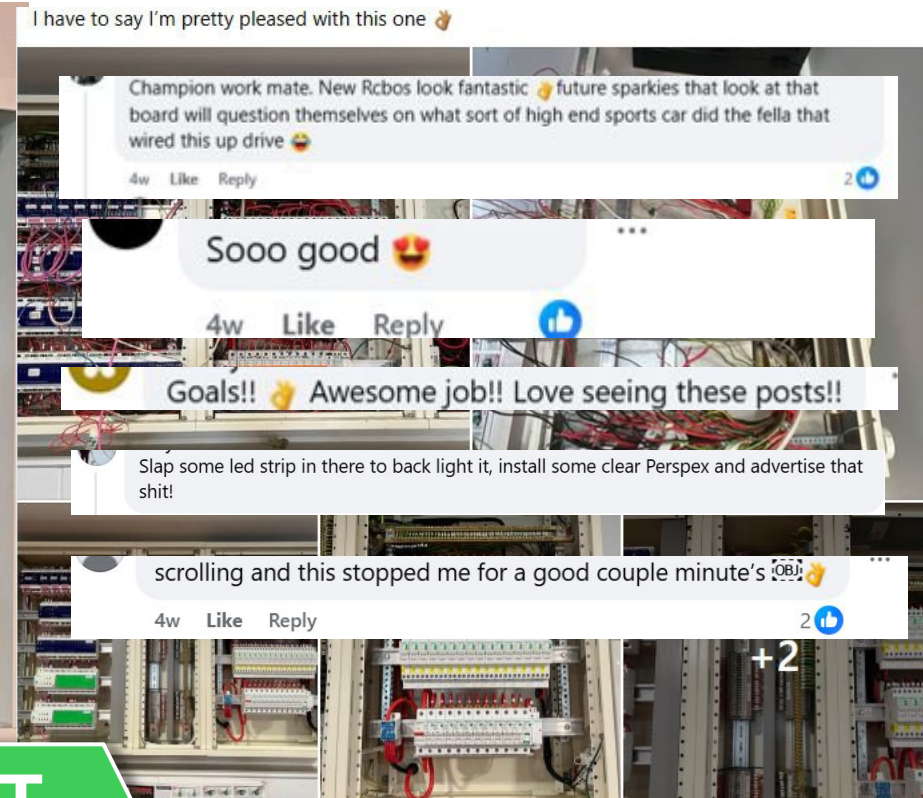
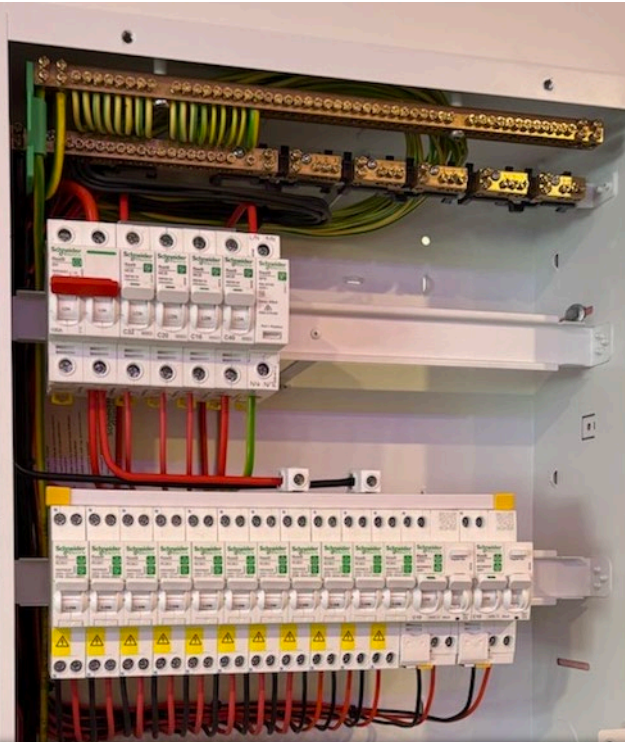
Source: Energy Efficiency and Conservation Authority



SWITCHBOARD CONTEXT

Increased adoption of EVs, solar and battery driving the need for more space in switchboards

- Not enough space in the current plastic switchboards with more devices (solar, EV, battery protection) coming into the picture
- Smart metering driving meter boards indoors (entryway, garage)
- Installation habits moving away from sub-boards to combined meter board solution
- Help prepare the market for greater adoption of 'Home Electrification' systems and the extra space needed to allow for this evolution



ELECTRICIAN CONTEXT

Electricians take pride in making homes safer and running efficient, professional businesses. Resi9 offers an opportunity to align with these values and support their growth.

- Driven by their need for **simple and efficient solutions**
- Looking for **revenue streams** that align with their values
- **Peace of mind** - it is a critical responsibility which calls for ultimate trust in a brand and product's reliability
- A **source of pride** - they take pride from a neat and tidy switchboard to showcase their craftsmanship & professionalism
- Bring **efficiency in installation**
- **Prefer to maintain brand consistency** and cohesion in their installs – want to use the same brand for devices and enclosures
- How this **shows up**.....

Life Is On

Schneider
Electric



COMPETITION CONTEXT

Traditional players play freely in the combined meter board and data board space today.

None of the competitors have a complete system in the market today

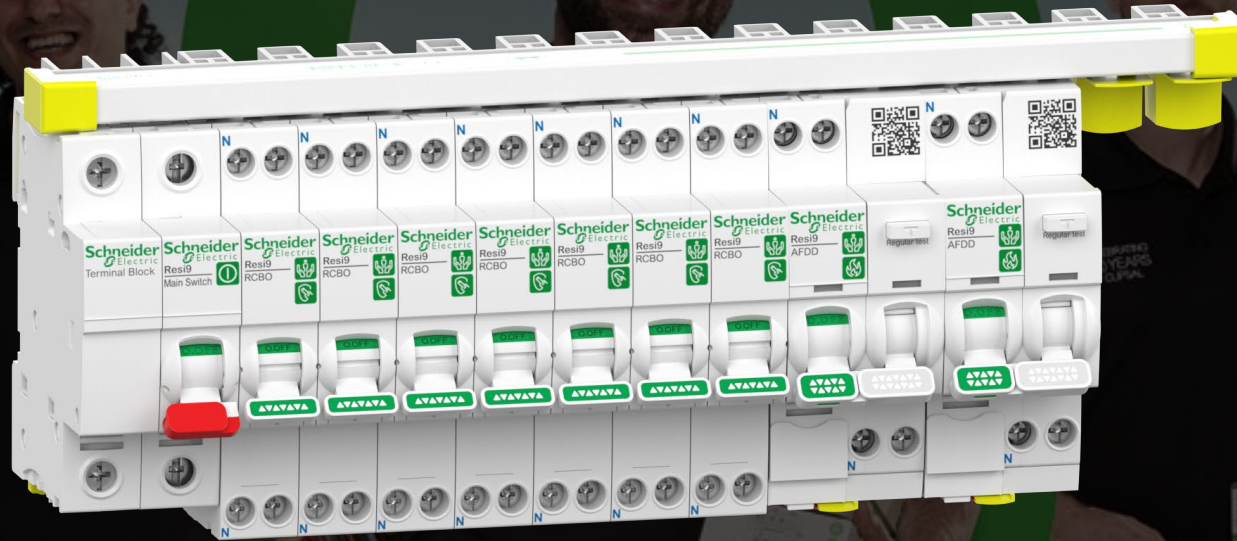


Resi9 Journey . . .

Resi9 | The ULTIMATE in Residential Circuit Protection

“The Resi9 range is a game changer. The MAXBAR system makes installs so much faster and cleaner.”

“I was pretty stoked with the functionality of the new Resi9 switchgear — clean, sustainable, and super-easy and quick to install.”



“I found the new MAXBAR method considerably quicker to fit off compared to the normal RCCB/MCB method. It also took up a lot less room in the switchboard, meaning more space for any future or additional work done.”

“Slim RCBOs are a win — especially for EV installs and tight renovations. Good thinking on the design.”



What we needed to do:

Custom design a combined meter board & data board solution for the unique NZ market conditions, that helps support residential market and support ease of transition to home electrification.

What we did:

Five rounds of in-depth NZ electrician customer feedback sessions to optimise the design and make it suitable for regional variations.



INTRODUCING RESI9 METER BOARD & DATA BOARD

Resi9

The Ultimate in
Residential
Circuit Protection



Introducing Enhanced Resi9 System | MAX Opportunities

Resi9 COMBINED METER BOARDS & DATA BOARD

+

Resi9 CIRCUIT PROTECTION SYSTEM

=

THE ULTIMATE RESI SYSTEM



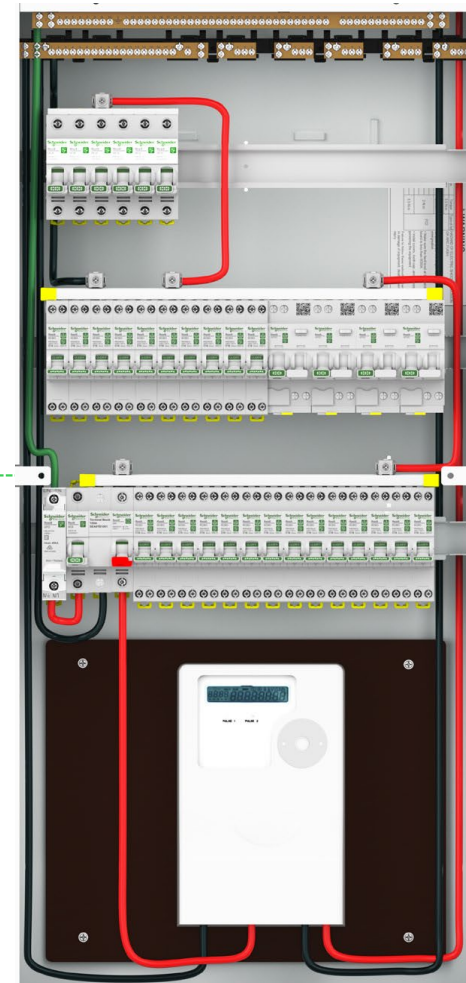
New Resi9 combined meter boards

New Resi9 data board

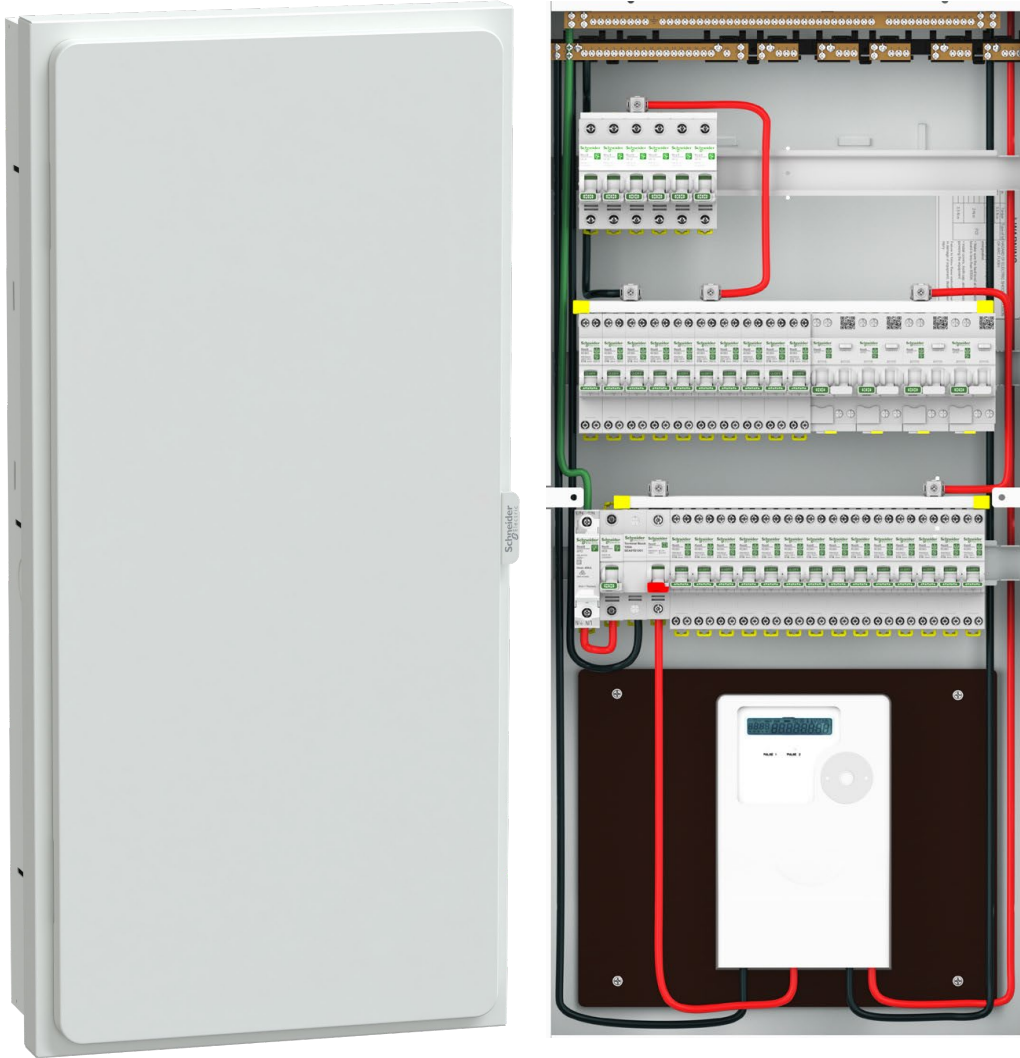
Sleek & Consistent design



Includes RCCB, MCB, RCBO, AFDD, SPD, MAXBAR, 1-3P Main switches, Plastic enclosures and accessories.



Embrace MAX BENEFITS



MAX PROFESSIONAL



MAX SPACE



MAX SPEED



MAX FLEXIBILITY

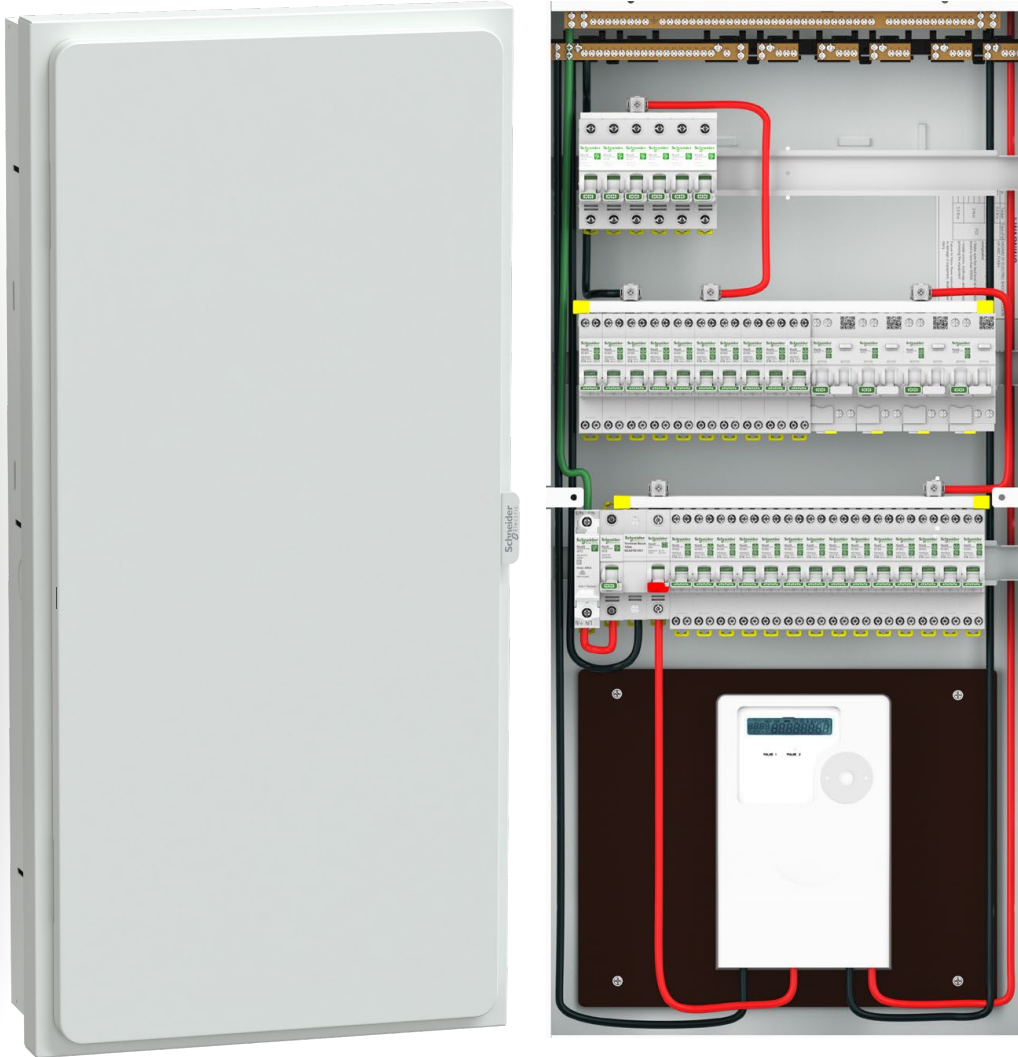


MAX EASE



MAX PERFORMANCE

Embrace MAX BENEFITS



MAX Professional – Sleek, consistent design across meter boards & data boards

MAX Space – 150mm between rows & extra space in the board for cable routing

MAX Flexibility – Reversible door & board orientation & adjustable neutral stud position

MAX Speed – Up to **2X** faster device installation with Resi9 MAXBAR*

MAX Ease – One comprehensive range for resi installs + plenty of knockouts for easy cabling

MAX Performance – 100A rated, 6kA system compliant with AS/NZS 61439.3

Life Is On

Schneider
Electric

Simple offer scope | 4 Boards + 2 MAXBARs

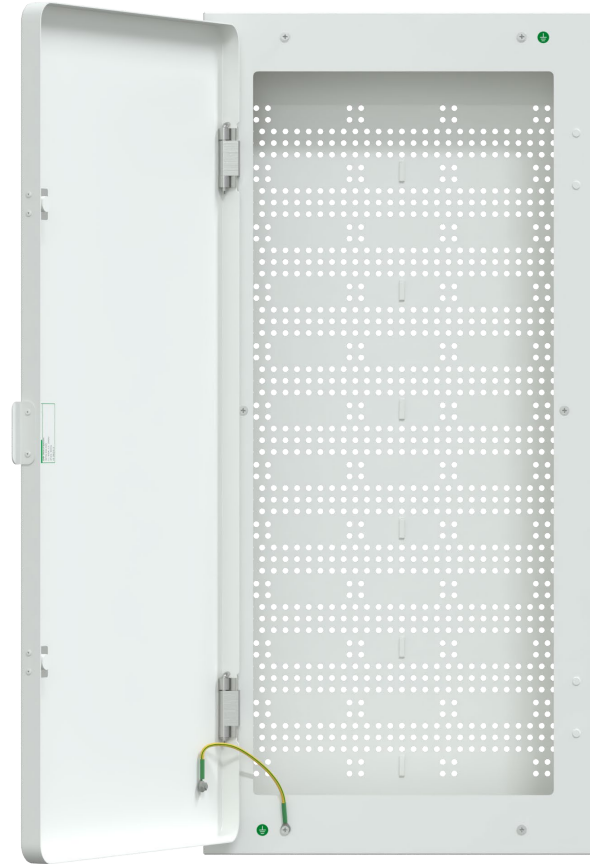


METERBOARDS



R9HMB218FD (36 way)
R9HMB318FD (54 way)
R9HMB324FD (72 way)

DATABOARDS



R9HDBLF

MAXBAR

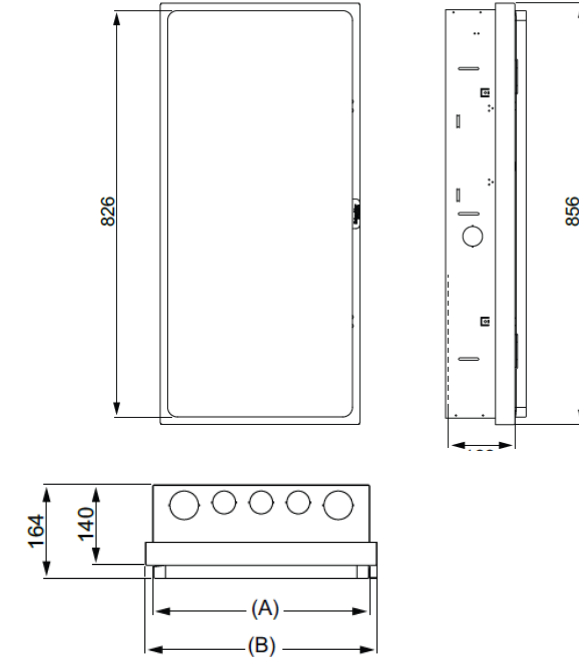


R9XPN121N
R9XPN121

Technical Data

Main characteristics	Meterboard
Rated current	100 A
Rated voltage	240/ 440 V
Rated insulation voltage	500 V
Material type	CRCA
IP rating - door closed	IP2X
IK rating	IK07
Color	RAL9003 White
Space between DIN rails	150 mm
Insulation class	1

Dimensions (mm)

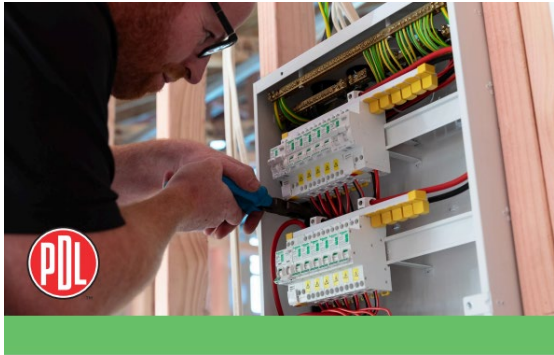


Meterboard Enclosure Dimensions			
	A	B	C
R9HMB218FD	376	406	380
R9HMB318FD	376	406	380
R9HMB324FD	516	546	520

A photograph of a family playing soccer in a backyard. A man in a white t-shirt and jeans is in the foreground, leaning forward. Two children, a girl and a boy, are in the background. A soccer ball is on the grass. The scene is set in a well-maintained backyard with a brick house and large windows. A white Schneider Resi9 meter board is overlaid on the right side of the image. The text "Resi9 Meter board & Data board" is written in large green letters across the middle of the image, and "Marketing Activation" is written in white below it.

Resi9 Meter board & Data board

Marketing Activation



Elevate Every Install with new Resi9 Boards

Today's homes are smarter, more connected, and more energy-conscious than ever. With the rise of EV chargers, solar systems, smart meters, and enhanced protection devices, the humble switchboard has never been more important.

PDL's new Resi9 combined Meter and Data boards meet this challenge head-on by providing a full metal enclosure solution, giving sparkies the opportunity to raise the bar in installation performance, professionalism and speed.

Designed alongside sparkies for sparkies, the new Resi9 boards deliver:

-  **MAX Professionalism**
Sleek and consistent design across meter and data board
-  **MAX Ease**
One comprehensive Resi9 range for residential installation that complements the revolutionary RCBO + MAXBAR
-  **MAX Space**
150mm between rows, extra space for cable routing
-  **MAX Performance**
100A rated, 6kA system compliant with AS/NZS 61439.3
-  **MAX Flexibility**
Reversible door, board orientation & adjustable neutral stud position



Three Simple Steps to Advanced Protection

The current level of basic protection is offered by MCBs and RCDs. However you have an option to upgrade to a more advanced level of protection to provide comprehensive safety for your home. PDL has three key levels of safety solutions for home switchboards: RCBOs, SPD and AFDDs.

- 1. RCBO**
Protect People & Cables
- 2. Surge Protection (SPD)**
Protect Appliances
- 3. Arc Fault Detection (AFDD)**
Detect Arc Faults



The Resi9 range can cover from basic to advanced protection in the home

Features	Resi9 Basic (RCDs, MCBs and Resi9 boards)	Resi9 RCBO + MAXBAR + Resi9 boards	Resi9 Enriched Safety (AFDDs, SPDs, RCBOs, MAXBAR & Resi9 boards)
Space for future enhancements	✓	✓	✓
Cohesive design	✓	✓	✓
Overload, S/C protection	✓	✓	✓
Shock protection	✓	✓	✓
Easier fault finding		✓	✓
Space optimisation		✓	✓
Surge protection			✓
Fire protection (Arc fault)			✓

WHS Flyer:

<https://www.pdl.co.nz/getmedia/b2e25b2e-d90e-4829-a2f0-6d4c1b92169b/PDL-Resi9-Meter-and-Data-boards-Electrician-Flyer.pdf>

Homeowner Flyer:

<https://www.pdl.co.nz/safety-and-protection>

Master Electricians article:

<https://masterelectricians100.co.nz/elevate-every-install-new-resi9-boards-give-sparkies-the-edge-in-a-competitive-market/>



Technical Catalogue:

https://download.schneider-electric.com/files?p_Doc_Ref=CR909002

Webpage: <https://www.pdl.co.nz/resi9>

Stock Package & QTY Breaks

Stock Package

Qty		Part Number	Description
Resi9 SLIM one module MCB/RCD combination (RCBO)			
3	R9HMB218FD	Resi9 MB 2 rows 18 modules deep flush	
4	R9HMB318FD	Resi9 MB 3 rows 18 modules deep flush	
1	R9HMB324FD	Resi9 MB 3 rows 24 modules deep flush	
6	R9HDBLF	Resi9 DB large flush	

14 boards

QTY Breaks

CODE	DESCRIPTION	QTY BREAK1 3% Disc.	QTY BREAK2 5% Disc.
R9HMB218FD	2 Rows 36M	16	32
R9HMB318FD	3 Rows 54M	16	32
R9HMB324FD	3 Rows 72M	16	32
R9HDBLF	Data board	14	28

The Resi9 range can cover from basic to advanced residential electrical protection, giving electricians the flexibility and control to customise each job and all within a trusted and well-known range.



Features	Resi9 Basic (RCDs & MCBs)	Resi9 RCBO + MAXBAR	Resi9 Enriched Safety	Resi9 Enriched safety + future readiness
Overload, S/C protection	✓	✓	✓	✓
Shock protection	✓	✓	✓	✓
Easier fault finding		✓	✓	✓
Space optimisation		✓	✓	✓
Surge protection			✓	✓
Fire protection			✓	✓
Future readiness (EV, Solar, Battery)				✓*



Life Is On



Resi9 Meter boards & Data boards

Feedback from electrician field trialists has been very positive!

"These are awesome. Nice and roomy (deep) etc. I only use Resi9 now with RCBO's. Probably will start using AFDD soon as a standard. The system is really well designed and a pleasure to install. With all the potential extra equipment that future installations will need, these sizes are perfect. One of the bugs of some boards are little space for neat cable management and a lack of robustness. Great work!"

"The rounded corners & satin finish give them a super premium look."

"Love the magnetic door handle."

"Dust protector is a great idea."

"Great to have an option to change between left and right neutral link"

"Looks better than any other board in the market"



"Solid!"



Available for orders now!

Resi9 | The ULTIMATE in Residential Circuit Protection



Life Is On



Life Is On

