



**/Y/NCO**

**POWER**

**UP**



## ABOUT VYNCO

We are a New Zealand family owned business that has been operating for over 30 years. We are proud to have our own in-house R&D team conducting research, design and the development of switchgear in NZ.



# VYNCO

## POWER UP

### SWITCHGEAR CATALOGUE



# REFRAME HOW YOU THINK ABOUT SWITCHGEAR

**Building or renovating your next home?**

Vynco's POWER UP programme provides you with multiple options regardless of your budget. Whether it's something classic or completely customised, you'll be surprised at the options you have to complete your home.

# VYNCO HOME

Our Home switchgear and socket range embodies a classic look that would complement any home. Home is the logical choice for any project.

Home is available in both black and white, with the ability to change out and customise any specialty switches to suit your specific needs.





VYNCO

HOME

POWERPOINTS



2P1HB  
SINGLE HORIZONTAL



2P2HB  
DOUBLE HORIZONTAL



2P2HXB  
DOUBLE HORIZONTAL  
WITH EXTRA SWITCH



2P1H  
SINGLE HORIZONTAL



2P2H  
DOUBLE HORIZONTAL



2P2HX  
DOUBLE HORIZONTAL  
WITH EXTRA SWITCH



2P2HU2  
DOUBLE HORIZONTAL  
WITH USB CHARGER



2P2HU2B  
DOUBLE HORIZONTAL  
WITH USB CHARGER

HOME TIP:  
Save the need for power  
adaptors and charge your USB  
powered devices straight from  
the powerpoint!



2P4H  
QUAD HORIZONTAL



2P1V  
SINGLE VERTICAL



2P2V  
DOUBLE VERTICAL



2P2VU2  
DOUBLE VERTICAL  
WITH USB CHARGER



2P2VX  
DOUBLE VERTICAL  
WITH EXTRA SWITCH



2P1VB  
SINGLE VERTICAL



2P2VB  
DOUBLE VERTICAL



2P2VU2B  
DOUBLE VERTICAL  
WITH USB CHARGER



2P2VXB  
DOUBLE VERTICAL  
WITH EXTRA SWITCH



2PC1  
PERMANENT CONNECTION



2PC1B  
PERMANENT CONNECTION



2S1  
ONE SWITCH



2S2  
TWO SWITCH



2S3  
THREE SWITCH



2S1P  
COVERPLATE ONLY



2S2P  
COVERPLATE ONLY



2S3P  
COVERPLATE ONLY



2S4P  
COVERPLATE ONLY



2S5P  
COVERPLATE ONLY



2S6P  
COVERPLATE ONLY



2SBP  
COVERPLATE ONLY



2S1B  
ONE SWITCH



2S2B  
TWO SWITCH



2S3B  
THREE SWITCH



2SBPB  
COVERPLATE ONLY



2S1PB  
COVERPLATE ONLY



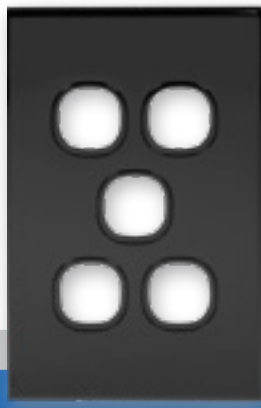
2S2PB  
COVERPLATE ONLY



2S3PB  
COVERPLATE ONLY



2S4PB  
COVERPLATE ONLY



2S5PB  
COVERPLATE ONLY



2S6PB  
COVERPLATE ONLY

# VYNCO METRO

Vynco Metro incorporates the homeowner's need for aesthetics and functionality, with a slim, curved satin fascia.

This range provides a subtle refresh of your home interior, while retaining a sophisticated, contemporary feel.

Metro has a wide range of printed switches and customised switch options to suit your specific needs.



**5 YEAR  
WARRANTY\***

\* Applies to Switchgear only.



**DESIGNED  
IN NZ**



Satin finish

**6.5mm\*\*  
profile**

\*\* The double horizontal with extra switch/USB has an 8.5mm profile.

VYNCO

METRO

SWITCHES, POWERPOINTS,  
& COVER PLATES



MSW1  
ONE SWITCH



MSW2  
TWO SWITCH



MSW3  
THREE SWITCH



MP2V  
DOUBLE VERTICAL



MP2H  
DOUBLE HORIZONTAL



MP2HX  
DOUBLE HORIZONTAL  
WITH EXTRA SWITCH



MP2HU2  
DOUBLE HORIZONTAL  
WITH USB CHARGER



MSW1P  
COVERPLATE ONLY



MSW2P  
COVERPLATE ONLY



MSW3P  
COVERPLATE ONLY



MSW4P  
COVERPLATE ONLY



MSW5P  
COVERPLATE ONLY



MSW6P  
COVERPLATE ONLY



MSWBP  
COVERPLATE ONLY





COMING SOON



**VST1M**  
DIAZ STEPLIGHT WITH MATCHING  
METRO COVERPLATE



**MBD**  
MOUNTING BLOCK, DEEP



**MP1V**  
SINGLE VERTICAL



**MP1H**  
SINGLE HORIZONTAL



# VYNCO URBAN

Vynco Urban combines engineering excellence with contemporary design to create a range perfect for high-end homes and buildings.

To tastefully blend switchgear into any environment, Urban has an ultra slim fascia\*. Urban plastic plates have the ability to be custom painted, or for a more muted finish select metal cover plates for powder coating.

Like previous ranges, Urban also has customisable specialty switches to suit your specific needs.



\* Applies to Switchgear only.



6.5mm\*\* profile

\*\* The double horizontal with extra switch/USB has an 8.5mm profile.



# VYNCO **URBAN**

WHITE SWITCHES, COVERPLATES,  
& POWERPOINTS



**USW1**  
ONE SWITCH



**USW2**  
TWO SWITCH



**USW3**  
THREE SWITCH



**UP2V**  
DOUBLE VERTICAL



**UP2H**  
DOUBLE HORIZONTAL



**USW1P**  
COVERPLATE ONLY



**USW2P**  
COVERPLATE ONLY



**USW3P**  
COVERPLATE ONLY



**USW4P**  
COVERPLATE ONLY



**UP2HU2**  
DOUBLE HORIZONTAL  
WITH USB CHARGER



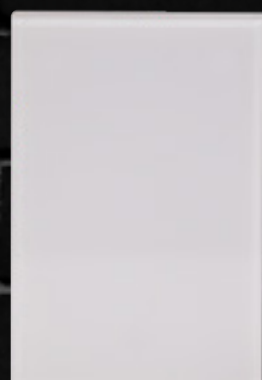
**UP2HX**  
DOUBLE HORIZONTAL  
WITH EXTRA SWITCH



**USW5P**  
COVERPLATE ONLY



**USW6P**  
COVERPLATE ONLY



**USWBP**  
COVERPLATE ONLY



COMING SOON  
**UP1H**  
SINGLE HORIZONTAL



COMING SOON  
**UP1V**  
SINGLE VERTICAL





# VYNCO URBAN

BLACK METAL SWITCHES,  
COVERPLATES, & POWERPOINTS



**UP2HBBM**  
DOUBLE HORIZONTAL



**UP2HU2BBM**  
DOUBLE HORIZONTAL  
WITH USB CHARGER



**UP2HXBBM**  
DOUBLE HORIZONTAL  
WITH EXTRA SWITCH



COMING SOON  
**UP1VBBM**  
SINGLE VERTICAL



COMING SOON  
**UP1HBBM**  
SINGLE HORIZONTAL



**UP2VBBM**  
DOUBLE VERTICAL



**USW1BBM**  
ONE SWITCH



**USW2BBM**  
TWO SWITCH



**USW3BBM**  
THREE SWITCH



**USW1PBBM**  
COVERPLATE ONLY



**USW2PBBM**  
COVERPLATE ONLY



**USW3PBBM**  
COVERPLATE ONLY



**USW4PBBM**  
COVERPLATE ONLY



**USW5PBBM**  
COVERPLATE ONLY



**USW6PBBM**  
COVERPLATE ONLY



**USWBPBBM**  
COVERPLATE ONLY



VYNCO

URBAN

SILVER METAL FASCIA



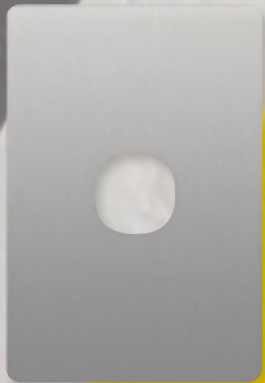
UP2HXFSM  
FASCIA ONLY



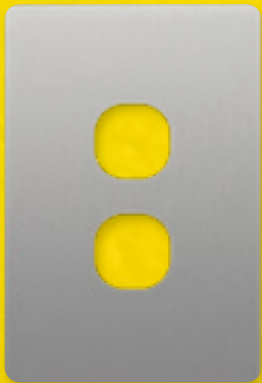
UP2HFSM  
FASCIA ONLY



UP2VFSM  
FASCIA ONLY



USW1FSM  
FASCIA ONLY



USW2FSM  
FASCIA ONLY



USW3FSM  
FASCIA ONLY



USW4FSM  
FASCIA ONLY



USW6FSM  
FASCIA ONLY



USWBFSM  
FASCIA ONLY

THIS FASCIA CAN BE USED  
FOR USW5P OR USW6P SWITCHES



ORDER IN  
URBAN WHITE  
OR URBAN BLACK  
METAL, THEN  
ORDER THE  
SILVER FASCIAS  
SEPARATELY TO  
MIX & MATCH.





# SWITCH ON TO CUSTOMISATION

**Inspired to do something a little different?**

Vynco has multiple customisation options. You can choose your own colour to match your decor, or create a feature accent on your wall. You can also select from our large range of specialty switches, dimmers, motion sensors or USB chargers.

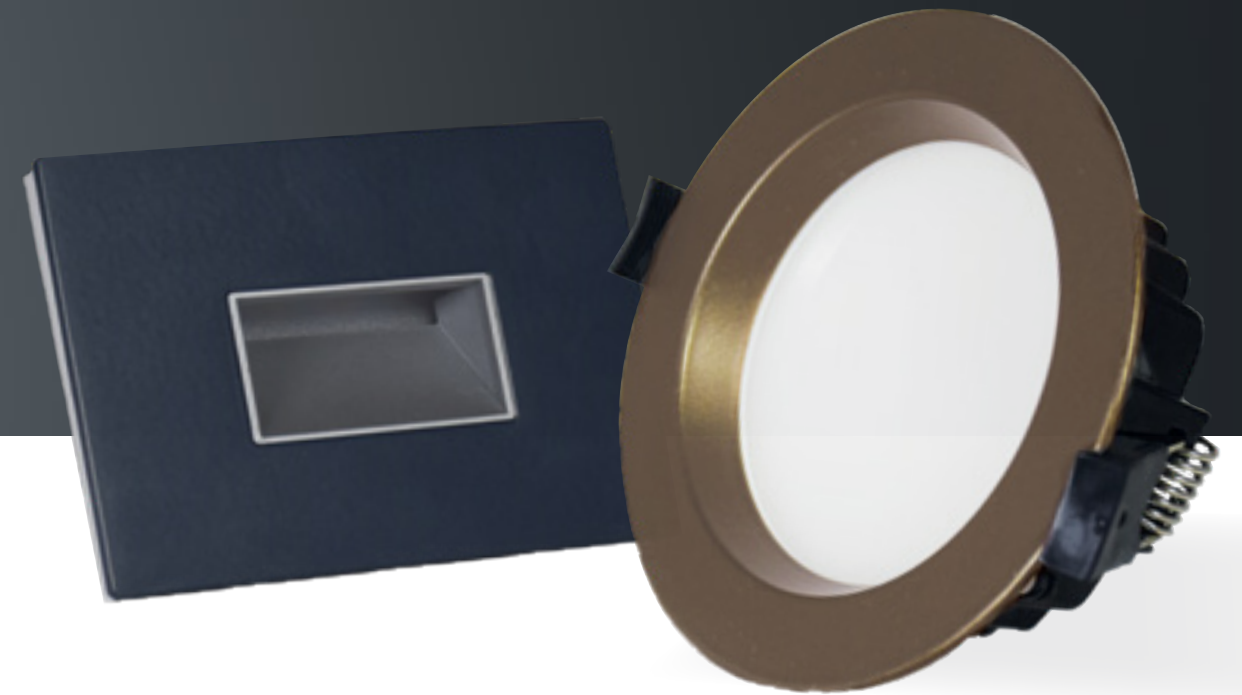
To view our full range of specialty switches visit:  
**VYNCO.CO.NZ**







## CUSTOM POWDER COATING



**Metal cover plates can now be powder coated to Dulux colours!  
Enquire about our powder coated\* Urban options today.**

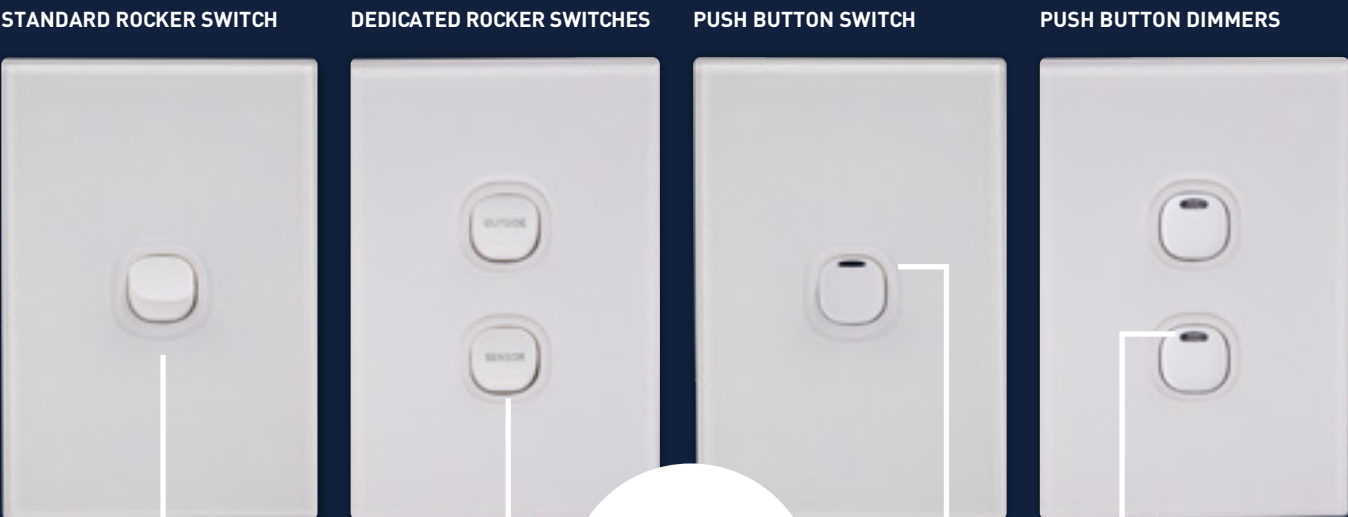
We provide special powder coating, from a set colour range, to give your switchgear a more matte, durable finish and an exact colour match.

Powder coating metal plates removes unwanted sheen and makes for a softer yet high quality accent to match the mood of your home. Future-proof your home for when colour trends change by simply swapping out the plates.

\*Minimum order quantities apply.

# SWITCHES

We have a range of different switches to suit your requirements. You can choose from standard, dedicated, push button switches or a push button dimmer which can also be used as a standard switch.



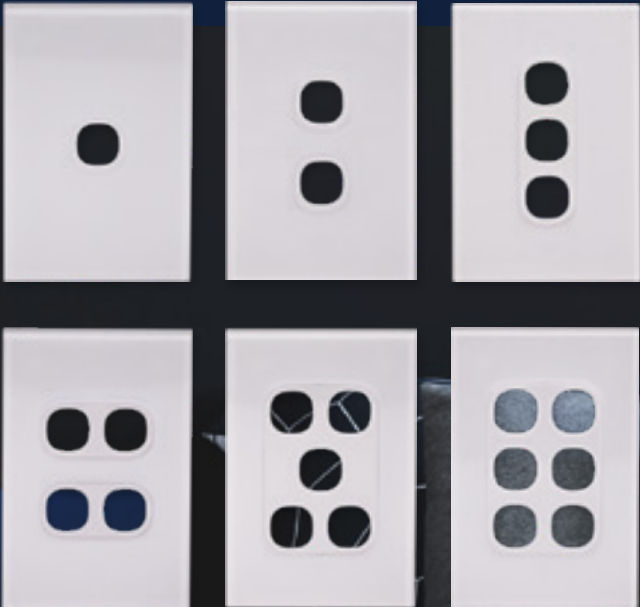
Standard switches can be ordered as complete units (refer to previous pages).

Dedicated switches are used for specific items or lighting in the home (i.e. "sensor" or "outside" which are laser engraved).

CUSTOM ENGRAVING AVAILABLE ON REQUEST

The push button switch and dimmer have a blue LED making it easy to locate in the dark.

Plates can be purchased separately, for 1-6 switches when selecting custom options such as dedicated switches, dimmers and push buttons.



# DIMMERS

Dimming options for your home – great for living rooms, bedrooms, and home theatres. Select the rotary dimmer for a more traditional look, or the push button dimmer for a modern option.



TRADITIONAL DIMMING OPTION WITH STANDARD SWITCHES

OR

TRADITIONAL DIMMERS USING MODERN PUSH BUTTON SWITCHES

OR

REMOVE TRADITIONAL DIMMERS AND OPT FOR MODERN PUSH BUTTON DIMMERS

Use the push button dimmer for a flush look, complimenting the slimness of our Urban and Metro ranges.







88PIRM  
MOTION SENSOR

## MOTION SENSORS

Great for use in walk-in wardrobes, ensuites, pantries and hallways. Used in conjunction with the Diaz Step Light, simply walking past the sensor will turn the light on.



88USBM2  
USB POWER  
CHARGER

## USB POWER CHARGER

Need to charge your phone or other USB appliance? This charger is perfect for living rooms, studies and bedrooms, removing the need for power adaptors and additional powerpoints. This charger can also be used in a switch plate, not just in a powerpoint.

### MOTION SENSOR WITH THE DIAZ STEP LIGHT



CUSTOM  
COLOURS  
AVAILABLE







## DIAZ STEP LIGHT

Match the Diaz Step Light to any of our Urban or Metro switches or powerpoints, available in white, black metal or silver metal. The Diaz Step Light is perfect for illuminating hallways, stairwells, or under vanities.



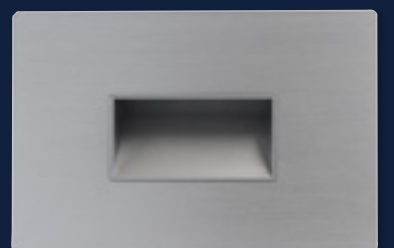
VST1M



VST1



VST1B



VST1S



# PACKAGING WITH THE ENVIRONMENT IN MIND

Sustainability is a big part of what we do and who we are at Vynco. We strive to minimise our environmental impact where possible, to keep New Zealand clean and green.

We have removed most plastics and paper from our packaging, including moving instructions to our website in digital form, which has saved over 110,000 sheets of paper and counting! We now use biodegradable, molded fibre packaging across some of our range, which breaks down with exposure to sun and water, at a much quicker rate than other materials. Like egg cartons, this form of packaging is composed of paper, card and newsprint, and fits snugly around the product, preventing damage.

Help us to reduce construction waste from your home by choosing Vynco products.











**This catalogue has Vynco's standard switchgear product range.**

For information on our full range, visit our website [vynco.co.nz](http://vynco.co.nz) or follow us on Facebook or Instagram @vynco\_industries

### **How can I see the product?**

**If you want to get your hands on the product, please contact your local electrician and they will be able to show you some samples.**

Alternatively, most leading electrical wholesalers will stock these ranges and will be happy to show you the product in-store. If these options don't suit, please contact our team at [sales@vynco.co.nz](mailto:sales@vynco.co.nz) and we'll arrange a viewing.

## **VYNCO**

### **Vynco Industries (NZ) Limited**

#### **Christchurch Office**

388 Tuam Street, Phillipstown, Christchurch, 8011  
PO Box 9022, Tower Junction, Christchurch 8149  
New Zealand  
**P** (+64) 3 379 9283 **F** (+64) 3 379 6838  
**E** [sales@vynco.co.nz](mailto:sales@vynco.co.nz)

#### **Auckland Office**

9 Levene Place, Mount Wellington, Auckland, 1060  
PO Box 12 249, Penrose, Auckland 1642  
New Zealand  
**P** (+64) 9 525 6051 **F** (+64) 9 525 5799  
**E** [sales@vynco.co.nz](mailto:sales@vynco.co.nz)

**VYNCO.CO.NZ**

PUB0100 v.19