

Goldair™



**Wall Mounted
Heating Solutions**



For more than 40 years, Goldair has been the leading name behind heating solutions that people love and trust in their homes. Goldair wall mounted heating combines natural-feeling background warmth with stylish, space saving designs. Their rapid heat up, silent operating and low surface temperature make them a safe and popular choice.

Wall mounted heaters are ideal for domestic and commercial use, especially when combined with other heating types. Perfect during seasonal transitions (spring and autumn) to provide a little extra background warmth, and in low use areas such as hallways, utility rooms and foyers.

With the increase in houses installing heat pumps and the introduction of new Government legislation, wall mounted heaters have become the ideal heating complement for the rest of the house.



THE GOLD STANDARD.

Backed by over 40 years of world-class technological development, all Goldair products meet and exceed the strictest standards. We wouldn't have it any other way. That's why you can be sure of our Safety and Reliability Guarantee.



Contents

Healthy homes guidelines	4
Guide to the guide & helpful tips	5
Featured products	6 & 7
Designer Fabric Panel heaters	8 - 11
Designer Panel heaters	12 & 13
Electronic Panel heaters	14 & 15
Manual Panel heaters	16 & 17
Wall Mounted Ceramic heaters	18 & 19
Goldair Wifi Range	20 & 21
Product Specification	22 & 23

Healthy Homes guide

The healthy homes standards introduced specific and minimum standards for heating, insulation, ventilation, moisture and drainage, and draught stopping in rental properties.



Landlords must provide fixed heating that can directly heat the main living area to a maintained temperature of at least 18 degrees Celsius.

What is the heating standard?



The main living area is the largest room that is used for general, everyday living – for example a lounge, family room or dining room. There must be fixed heating that can directly heat the main living area to at least 18 degrees Celsius.

To find out what size of fixed heater that you need use the online assessment tool at www.tenancy.govt.nz/heating-tool

For more information around the regulations and requirements related to the Healthy Homes legislation please visit the www.tenancy.govt.nz/healthy-homes

Why Goldair?

Goldair has developed a range of fixed wall mounted heating solutions to provide the main heating source in a variety of room sizes, as well as additional complementary products to top-up the main heating source, bringing it up to the required level of compliance.



Guide to the guide

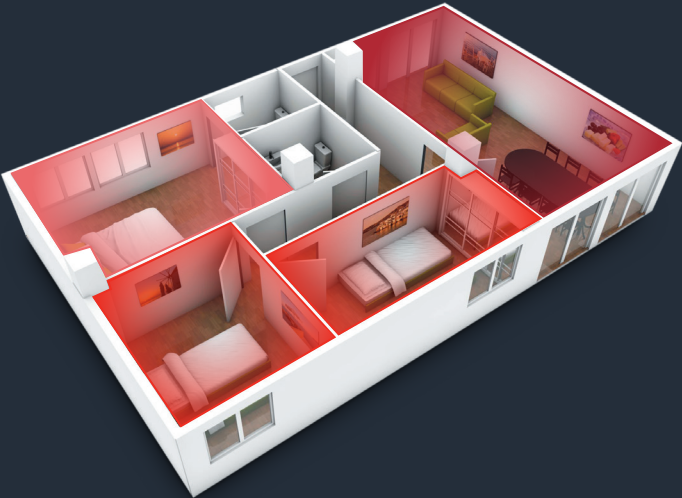
Room Type:

- S

SMALL 10m²
 Small bedrooms, home offices
- M

MEDIUM 10m² - 18m²
 Bedrooms, dining rooms and hallways
- L

LARGE 18m² - 28m²
 Lounges, large bedrooms



Fixing Type:

- F

Fixed – heaters designed to fix on walls
- P

Portable – heaters that can be moved from room to room

Cost guide:

- 46^c

Per hour – based on average 0.335c per kWh*
- €31

Per month – average 30 day month+

	Room type	Fixing type	Cost per hour*	Cost per month+
500W	S	F/P	17 ^c	€11
1000W	S	F/P	34 ^c	€23
1500W	M	F/P	50 ^c	€34
2000W	L	F/P	67 ^c	€45
2400W	L	F/P	80 ^c	€54

*Images shown in this guide are a representation of the type of heater. The range available in store may differ. You can apply the room type, fixing type and costs guide to all models of a heater type.

DISCLAIMER: 01/02/24
 *Based on 0.335c per kWh being the average kWh price across New Zealand (Source: MBIE Quarterly survey of domestic electricity prices 15 Feb 2023)
 +Based on 0.335c per kWh, average 3 hours per day for 30 days with a thermostat operating
 Goldair have made every effort to ensure that the information in this guide is correct at time of printing. Power pricing information should be used as a guide only. The information provided assumes the thermostat is operating efficiently due to the house being insulated, having curtains and no significant draft ingress. Goldair cannot be held responsible for any misunderstanding, disputes or claims relating to any consumer's power usage.



Space Saving

Save floor space by mounting on the wall and control via remote.

GCW220

Wall Mounted Ceramic Heater with timer and remote control.



Wall Mounted or Castor Wheels

Either mount to the wall for a fixed heating solution or keep on the castor wheels for a portable heating option.

GPH450

Metal Panel Heater with dial control.

Create the convection airflow for full room heating by either mounting on the wall or keeping as a portable option that can move between rooms.

GPPH630

Metal Panel Heater with Inverter, Electronic and wifi control.






WIFI & SMART HOME ENABLED



OPERATE REMOTELY



24HR SCHEDULE TIMER FUNCTION



VOICE CONTROL



ELECTRONIC CONTROLS



INVERTER ENERGY TECHNOLOGY



24HR SCHEDULE TIMER FUNCTION

3

YEAR WARRANTY





MANUAL CONTROLS



ADJUSTABLE THERMOSTAT

2

YEAR WARRANTY

MANUAL CONTROLS

DESIGNED
IN EUROPE



Designer Series Wall Mounted Fabric Panel Heaters

with Electronic Control, Wifi and Inverter

Crafted with a keen eye on contemporary European design, Goldair Platinum's Eurotech panel heaters boast a distinctive fabric finish on their bodies, harmonizing seamlessly with the chic aesthetics of today's New Zealand homes.

Elevate your space by selecting either the sophisticated granite or stone fabric finish and pair it with our cutting-edge technology, delivering an effective and fashionable heating solution.



- Download to your own smartphone or tablet from the Apple App Store or Google Play
- Control the heater on the fly. A downloadable app lets you easily set and monitor the temperature, and timers.



Eurotech Wall Mounted Fabric Panel Heaters

with Electronic Control, Wifi and Inverter

Goldair Platinum Eurotech heaters feature modern European design, combined with our market leading technology to give you an efficient and stylish heating solution



5 Heat Settings



Overheat Protection



Electronic Thermostat



Safety Tilt Switch



Wall Mountable or Castors

Full Colour Touch Control

Soft touch buttons add a stylish touch to the full colour screen allowing you to control your heater with greater ease.

Inverter Technology

Inverter control systems enable smooth change of power to precisely maintain room temperature while saving you electricity.

Extended Warranty

The warranty period for Goldair Platinum Heaters is 3 years.

Wifi Enabled

Goldair App allows you to adjust monitor, and set weekly schedules for the heater

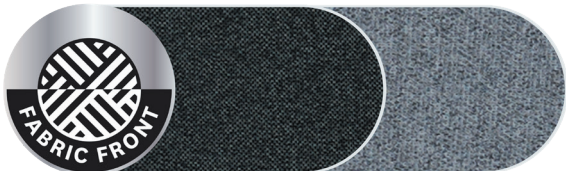


· Control the heater on the fly. A downloadable app lets you easily set and monitor the temperature and timers from your smartphone or tablet.



No Flame - Fire Retardant Fabric

	Room type	Fixing type	Cost per hour*	Cost per month
2000W	L	F/P	67°C	\$45



DISCLAIMER: 01/02/24

*Based on 0.335c per kWh being the average kWh price across New Zealand (Source: MBIE Quarterly survey of domestic electricity prices 15 Feb 2023)

·Based on 0.335c per kWh, average 3 hours per day for 30 days with a thermostat operating.

See www.goldair.co.nz for more details, including all our spec sheets and user manuals made available for download.



WIFI
ENABLED
CONTROLS



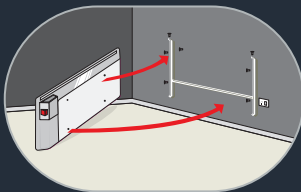
24HR
SCHEDULE
TIMER
FUNCTION



3
YEAR
WARRANTY

GPPH900 2000W
820L x 475H x 130D(mm)

GPPH910 2000W
820L x 475H x 130D(mm)

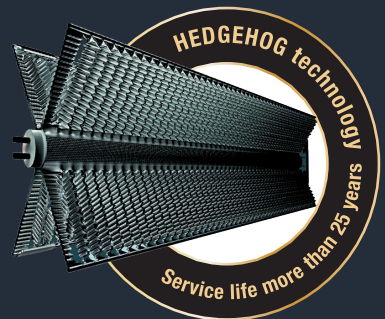


Wall mountable option
Saves up valuable floor space



**Optional Feet for a
portable option**

Pair the product through the
Goldair App and have full
control from the comfort of your
couch



Hedgehog Element

This unique patented compact heating element design results in faster heating time due to the increased surface area of the heating element.

Cool air flows through the element rather than over, increasing the heat output efficiency.

Designer Series Wall Mounted Panel Heaters

with Electronic Control, Wifi

Opt for the flexibility of wall mounting or maintain portability with the contemporary Scandinavian-inspired feet featured in the Goldair Platinum Designer Series Panel Heater.

- **2 Heat Settings**
- **Overheat Protection**
- **Electronic Thermostat**
- **Safety Tilt Switch**
- **Wall Mountable or Feet**

Designed to effectively warm even the most spacious rooms, this 2400W panel heater incorporates a cast element for enhanced inertia and power.

Tailor your heating experience using the scheduler function on the Goldair App, and seamlessly integrate our state-of-the-art technology and functionality for an efficient and stylish heating solution tailored to complement any New Zealand household.

GPCV400 2400W
955L x 480H x 140D(mm)



Control the heater on the fly. A downloadable app lets you easily set and monitor the temperature and timers from your smartphone or tablet.

	Room type	Fixing type	Cost per hour*	Cost per month+
2400W	L	F/P	80 ^{°C}	\$54

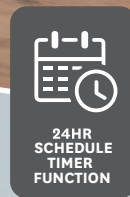


Adjustable Thermostat
Regulate your level of warmth



Optional Modern Scandi-feet

DISCLAIMER: 01/02/24
*Based on 0.335c per kWh being the average kWh price across New Zealand (Source: MBIE Quarterly survey of domestic electricity prices 15 Feb 2023)
+Based on 0.335c per kWh, average 3 hours per day for 30 days with a thermostat operating.
See www.goldair.co.nz for more details, including all our spec sheets and user manuals made available for download.



Wall Mounted Metal Panel Heaters

with Electronic Control, Wifi and Inverter

Goldair's Platinum HeatSmart Panel Heater, featuring unique inverter technology, can intelligently optimise energy use. In other words, by using less energy to keep you warm it can help to lower winter power bills.



5 Heat Settings



Overheat Protection



Electronic Thermostat



Safety Tilt Switch



Wall Mountable or Castors

Inverter Technology

Inverter control systems enable smooth change of power to precisely maintain room temperature while saving you electricity.

Extended Warranty

The warranty period for Goldair Platinum Heaters is 3 years.

AirPurification System

BIO Filter System.

WIFI Enabled

Goldair app allows you to adjust and monitor

Aerodynamic Shape of Housing

Air Dynamic System enhances heating airflow.

Monolithic Heating Element

High performance heating element.

	Room type	Fixing type	Cost per hour*	Cost per month+
1000W	S	F/P	34 ^c	\$23
1500W	M	F/P	50 ^c	\$34
2000W	L	F/P	67 ^c	\$45
2400W	L	F/P	80 ^c	\$54



- Control the heater on the fly. A downloadable app lets you easily set and monitor the temperature and timers from your smartphone or tablet.

DISCLAIMER: 01/02/24

*Based on 0.335c per kWh being the average kWh price across New Zealand (Source: MBIE Quarterly survey of domestic electricity prices 15 Feb 2023)

+Based on 0.335c per kWh, average 3 hours per day for 30 days with a thermostat operating.

See www.goldair.co.nz for more details, including all our spec sheets and user manuals made available for download.



Similar in design to the Manual versions, the Electronic Panel Heaters have additional features such as Inverter, WIFI and Electronic controls included as standard features, making them more adaptable to your personal requirements.

GPPH610 1000W
475L x 430H x 130D(mm)

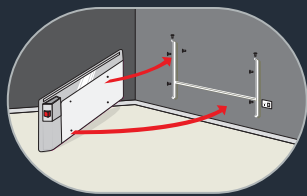
GPPH630 2000W
800L x 430H x 130D(mm)

GPPH620 1500W
690L x 430H x 130D(mm)

GPPH490 2400W
1000L x 450H x 265D(mm)

Adjustable Thermostat

- Regulate your level of warmth



Wall mountable option
Saves up valuable floor space



Optional Castor wheels
Easy to move around



Wall Mounted Metal Panel Heaters

with Manual Control

Panel heaters are convection heaters and provide warmth based on the principle of hot air attracting cool air over a large panel surface. Air is drawn over the element and rises up through the unit and out the top through vents.

Panel heaters are typically wall mounted and provide efficient heating in lounges, hallways and bedrooms.

Great for

- Lounges, hallways, & bedrooms
- Heat pump complementary heating
- Quiet operation
- Simple manual operation

Features may include:



2 Heat Settings



Overheat Protection



Safety Tilt Switch



Adjustable Thermostat



Wall Mountable and Castors



	Room type	Fixing type	Cost per hour*	Cost per month+
500W	S	F/P	17°C	\$11
1000W	S	F/P	34°C	\$23

	Room type	Fixing type	Cost per hour*	Cost per month+
1500W	M	F/P	50°C	\$34
2000W	L	F/P	67°C	\$45
2400W	L	F/P	80°C	\$54

DISCLAIMER: 01/02/24

*Based on 0.335c per kWh being the average kWh price across New Zealand (Source: MBIE Quarterly survey of domestic electricity prices 15 Feb 2023)

+Based on 0.335c per kWh, average 3 hours per day for 30 days with a thermostat operating.

See www.goldair.co.nz for more details, including all our spec sheets and user manuals made available for download.

Similar in design to the Electronic versions, these Manual control panel heaters are excellent complementary heaters to heat pumps for areas such as hallways and bedrooms.

Each size comes with an easy to install mounting bracket so these can be fixed to the wall in no time, saving valuable floor space and providing a fixed heating source.



GPH150 500W
475L x 450H x 130D(mm)

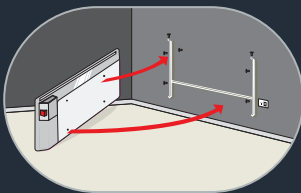
GPH250 1000W
475L x 450H x 130D(mm)

Adjustable thermostat
Regulate your level of warmth

GPH350 1500W
620L x 450H x 130D(mm)

GPH450 2000W
780L x 450H x 130D(mm)

GPH480 2400W
1000L x 450H x 130D(mm)



Wall mountable option
Saves up valuable floor space



Optional Castor wheels
Easy to move around



Wall Mounted Ceramic Heaters

Ceramic Wall heaters are perfect for those rooms where space is limited. Safety is also a big feature for these products as they are mounted high up on the wall, keeping them at a safe distance from younger ones.

With Ceramic Wall heaters being mounted on a wall, these also are a perfect choice for the landlord that needs to provide a fixed form of heating.

Great for

- Lounges, hallways, & bedrooms
- Heat pump complementary heating
- Quiet operation
- Simple manual operation

Features include:



2 Heat Settings



Overheat Protection



Adjustable Thermostat



Timer Function



Digital Display



Remote Control



GCW220 2000W

	Room type	Fixing type	Cost per hour*	Cost per month+
2000W	L	F	67°C	≈45

DISCLAIMER: 01/02/24

*Based on 0.335c per kWh being the average kWh price across New Zealand (Source: MBIE Quarterly survey of domestic electricity prices 15 Feb 2023)

+Based on 0.335c per kWh, average 3 hours per day for 30 days with a thermostat operating.

See www.goldair.co.nz for more details, including all our spec sheets and user manuals made available for download.





Get Smart

Wifi & Smart Home Integration

Combining modern design with innovative technology, we are leading the charge with our Smart Home seasonal products. All our Wifi enabled products can be paired for free with our very own Goldair app and are Amazon Alexa and Google Home device compatible. With over 50 Goldair Wifi & Smart Home enabled products to choose from, sit back, get smart and get warm this winter.

Operate your devices conveniently from one place with our very own Goldair app. Pair your Wifi enabled devices by simply downloading the Goldair app from the Apple store or Google Play. For instructions on your individual device, go to:

<https://goldair.co.nz/goldair-app>
or use this handy QR code to get there.



Our app mirrors the functionality of your heater, allowing you to turn on and off, set different modes, or timer functions if they are available on your device. In some models, the app has hidden features not available on your device, such as a full week scheduler opening it up for even more flexibility.



Flexibility

Add unlimited Goldair devices to your app as often as you want



Energy Saving

Promotes energy efficiency by setting timers or schedulers on your devices



Safety First

Our app still maintains all Goldair's high safety standards for your peace of mind



- Control the heater on the fly. A downloadable app lets you easily set and monitor the temperature and timers from your smartphone or tablet.



Smart Home

Wifi & Smart Home Integration

Experience the coordination and convenience of home automation by turning your space in to a Smart Home, where your electronic devices can be operated through your WiFi via your phone, or voice assistant device. From light bulbs to security cameras and of course heating and cooling products, Smart Homes are the future in providing you with security, efficiency and flexibility.

We have paired all Goldair WiFi enabled devices to work with Amazon Alexa and Google Home devices, giving you flexibility to use your phone or voice to automate the Goldair devices you choose to take home to your new Smart Home World.

works with 

“Alexa, turn my bedroom heater on”

works with  **Hey Google**

“Hey Google, turn my bedroom heater off”

We Recommend

Here at Goldair, we embrace the ever-evolving technology world working consistently on our development, engineering and testing of our products to bring the highest standard and quality of heating devices to New Zealand shores. See below some of our most recommended wall mountable heating products compatible with WiFi and Smart Home automation.



THE GOLD STANDARD.

Every Goldair product is tested and tested again so it can be trusted to be safe and reliable.



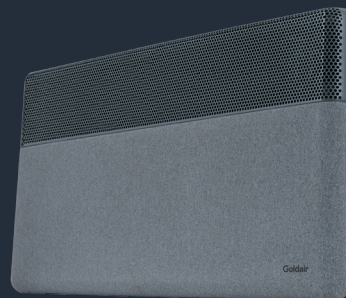
GPPH630 2000W

Ideal for large rooms
see page 15



GPCV400 2400W

Ideal for large rooms
see page 12



GPPH900 2000W

Ideal for large rooms
see page 10



Wall Mounted Ceramic Heaters

Model	Watts	Room Size	Width (mm)	Height (mm)	Depth (mm)
GCW220	2000	Medium/Large 10m ² - 20m ²	510	220	135

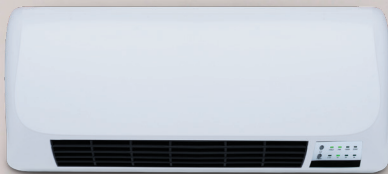
Wall Mounted Electronic Control Panel Heaters

Model	Watts	Room Size	Width (mm)	Height (mm)	Depth (mm)
GPPH610	1000	Small 10m ²	475	430	130
GPPH620	1500	Medium 10m ² - 15m ²	690	430	130
GPPH630	2000	Large 15m ² - 20m ²	800	430	130
GPPH490	2400	Medium/Large 10m ² - 20m ²	1000	265	450
GPCV400	2400	Large 15m ² - 20m ²	955	480	140
GPPH900	2000	Large 15m ² - 20m ²	820	475	130
GPPH910	2000	Large 15m ² - 20m ²	820	475	130

Wall Mounted Manual Control Panel Heaters

Model	Watts	Room Size	Width (mm)	Height (mm)	Depth (mm)
GPH150	500	Small 10m ²	475	450	130
GPH250	1000	Small 10m ²	475	450	130
GPH350	1500	Medium 10m ² - 15m ²	620	450	130
GPH450	2000	Large 15m ² - 20m ²	780	450	130
GPH480	2400	Large 15m ² - 20m ²	1000	450	130

MINIMUM SIDE
INSTALLATION
CLEARANCE
200mm



MINIMUM SIDE
INSTALLATION
CLEARANCE
200mm



Wall Mounted Ceramic Heaters

NOTE POWERCORD COMES OUT
FROM BELOW THE CONTROL
PANEL ON RIGHT HAND SIDE.
LENGTH APPROX 1.2-1.5M



300MM
MINIMUM CLEARANCE FROM
OBJECT ABOVE



1800MM
MINIMUM CLEARANCE FROM
FLOOR



300MM
MINIMUM CLEARANCE FROM
OBJECT ABOVE

MINIMUM SIDE
INSTALLATION
CLEARANCE
150mm



MINIMUM SIDE
INSTALLATION
CLEARANCE
150mm



Wall Mounted Panel Heaters

NOTE POWERCORD COMES OUT
FROM BELOW THE CONTROL
PANEL ON RIGHT HAND SIDE.
LENGTH APPROX 1.2-1.5M



CLEARANCE FROM FLOOR
150MM MINIMUM
300MM MAXIMUM

Wall Mounted Installation Guide



CDB 
GROUP