

Heiman Wireless Interlinked Smoke Alarm

HM2SA-1W-T



The Heiman wireless range offers user-friendly features and seamless connectivity through advanced Radio Frequency Technology. They can be set up quickly and effortlessly in just 2 minutes without the need for wiring. When triggered, the alarms synchronise to sound together, providing enhanced fire protection for your home.

Features:

- 10-year Sealed Lithium Battery
- Sound Level 85db at 3 metres
- Connection to up to 40 alarms
- Alarm Pause (10-Minute Hush Mode)
- Low Battery Warning
- Ceiling or Wall Installation
- Meets EN14604 standard
- 10 Year Warranty
- 200m Network Distance
- Operating Temperature: 0°C-+55°C

Heiman Wireless Interlinked Heat Alarm

HM-5HW-T



Introducing the Heiman Heat Alarm: This alarm is designed to provide early warning of flaming fires in areas where traditional smoke alarms may not be suitable, such as kitchens, laundries, garages, or workshops.

The alarm will sound when the temperature suddenly and sustainably rises above 57°C.

Features:

- 10-year Sealed Lithium Battery
- Sound Level 85db at 3 metres
- Connection to up to 40 alarms
- Alarm Pause (10-Minute Hush Mode)
- Low Battery Warning
- Ceiling Installation
- Meets EN14604 standard
- 10 Year Warranty
- 150m Network Distance
- Operating Temperature: 54°C-+65°C

Heiman Wireless Interlinked Remote Controller

HM-1RC



The Heiman remote allows you to conveniently test and hush your smoke and heat alarms with ease.

This feature enhances ease of use and accessibility, giving you added convenience and control over your home fire protection system.

Features:

- 10-year Sealed Lithium Battery
- Separate Fire and CO Alarm Indicators
- Low Battery and Fault Indicator
- Operating Temperature: -10°C-+55°C
- 433Mhz or 868Mhz Frequency
- 100m Open Area Network Distance
- Allows the User to Remotely Mute and Self-Test Heiman Wireless Interlinked Smoke Alarm HM2SA-1W-T & Heiman Wireless Interlinked Heat Alarm HM-5HW-T

Discover Heiman Wireless Alarms

HM2SA-1W-T HM-5HW-T HM-1RC

The new standard in home fire detection and safety

Ensure maximum safety in your home with our comprehensive smoke and heat alarm installation guidelines

Bedroom Protection:

Install interconnected smoke alarms in every bedroom to ensure you are alerted in the event of a fire.

Living Areas:

To protect your family throughout the home, place interconnected smoke alarms in all living spaces, hallways, and landings.

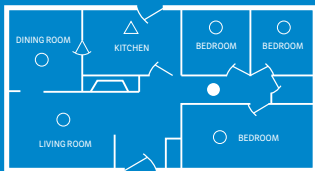
Multi-Level Homes:

For homes with multiple levels, equip each level with at least one interconnected smoke alarm to ensure complete coverage.

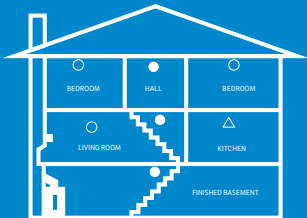
Kitchen Safety:

An interconnected heat alarm is required if closable doors separate your kitchen from other living areas and hallways, including any adjacent sculleries.

Single Story Dwelling



Two Story Dwelling



- Smoke alarm devices for limited protection
- Additional smoke alarm devices for better coverage
- △ Heat alarms

Ceiling Mounting

Smoke Alarm

For optimal performance, mount the smoke alarm on the ceiling in a central location with good air circulation.

- Avoid placing it in corners or near objects that may block airflow.
- Keep the unit at least 300mm away from light fittings or decorative objects and at least 200mm from walls to ensure that smoke and heat can easily reach the alarm.

Heat Alarm

The heat alarm should be installed on a ceiling within 5 metres of the potential fire hazard to ensure optimal performance.

- Avoid mounting it in areas with poor air circulation, such as room corners, and keep clear of any obstructions that impede airflow.
- Maintain a minimum distance of 200mm from walls.

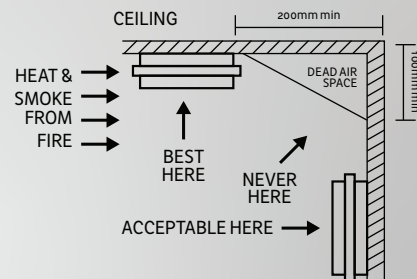


Figure. 1

Wall Mounting

Do not install the smoke alarm near corners. When mounting the alarm on the wall, use an inside wall with the top edge of the alarm at a minimum of 100mm and a maximum of 300mm below the ceiling. It is not recommended to wall mount heat alarms.

Sloping Ceiling Mounting

In areas with sloping or "A" frame-type ceilings, smoke alarms should be between 200mm and 500mm from the apex because "dead air" may prevent smoke from reaching the unit.

Apex of Sloping Ceiling

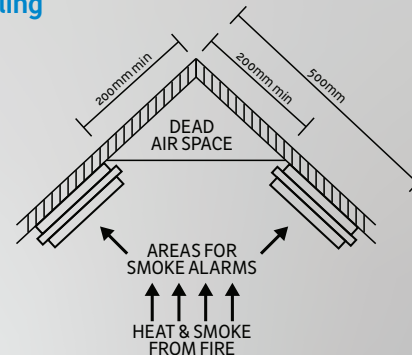


Figure. 2

Areas to be Avoided

- In dead space areas shown in figures 1 & 2.
- Situations where the temperature may fall below 5°C or rise above 45°C.
- Smoke Alarms are not suitable in humid areas such as bathrooms, kitchens, and shower rooms where the relative humidity may exceed 85%
- Near a decorative object, door, light fitting, window moulding, etc., that may prevent smoke or heat from entering the alarm.
- Fume-filled environments such as garages. Exhaust gases may cause false alarms. Use a Heiman heat alarm in these locations.
- Adjacent to or directly above hot components such as radiators or wall vents that can affect the direction of air currents.
- In very dusty or dirty environments such as workshops or attics.
- Locate the unit at least 1.5m from fluorescent light fittings, as electrical "noise" or flickering may affect it.
- Do not locate in insect-infested areas. Insects and contamination on the Smoke Alarm sensor can cause false alarms.
- Within 1m from a cooktop, and where possible, a minimum 3m clearance from a cooktop should be maintained.
- In attics, roof spaces, or other places where temperature extremes, dust, and high airflows may occur.
- Closer than 400mm to the air supply opening of an air conditioning unit or forced air ventilation unit.
- Closer than 400mm outside the circumference of the blades of a ceiling fan.
- Closer than 400mm to any air supply opening.
- Within 300mm of a light fitting (non-fluorescent).