

Pro Series for Commercial buildings



Pro Series – Targeting commercial buildings



Pro Series – Designed for commercial buildings



Advantages

- Circuit identification
- Secured Skin
- Robustness



**GOOD
DESIGN
AWARD[®]
WINNER**

[Watch the video](#)

[Refer to the brochure](#)



Wiped – Fade Identification



Broken skin



Traffolyte labels



Lost covers




Dymo labels identification




Peeled-off labels



Lost covers

 On-Site visits

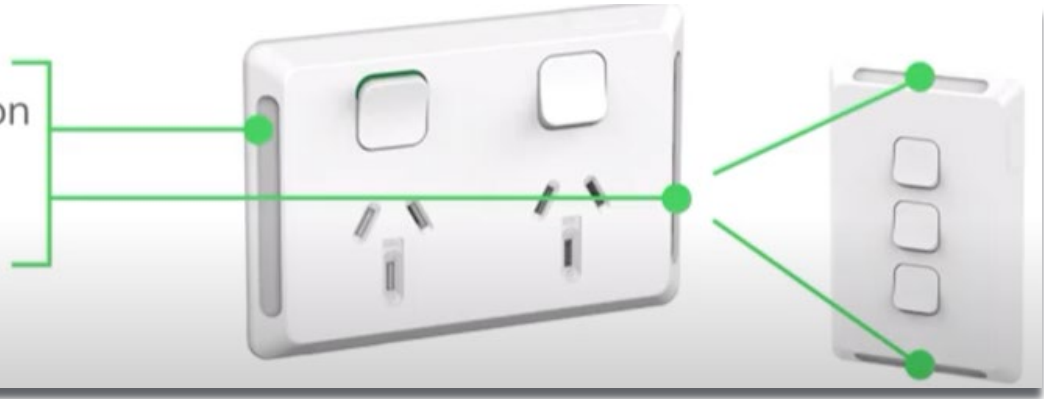
 + 200 customers meetings

To **define & validate** the solutions

Customer requirements led the design

Pro Series – Circuit identification

Permanent identification
Consistent labelling
Easy to read



Labels adhere to panels integrated within the grid to avoid being inadvertently swapped with skins

MSBA - CB18W

Traffolyte label

MSBA - CB18W

DYMO label



Pro Series – Secured Skin



Clip - It's secured

One clip action to install the skin onto the dedicated grid and it's now tamper proof



Protected screws

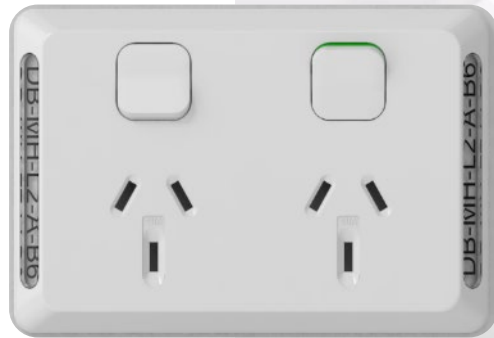
Screw covers help prevent direct access to the screws
No visible screws once installed



Secured skin can be removed with screwdriver or skin removal tool



Pro Series – Robustness



Resists hard knocks

Standard sockets impact rating to IK08

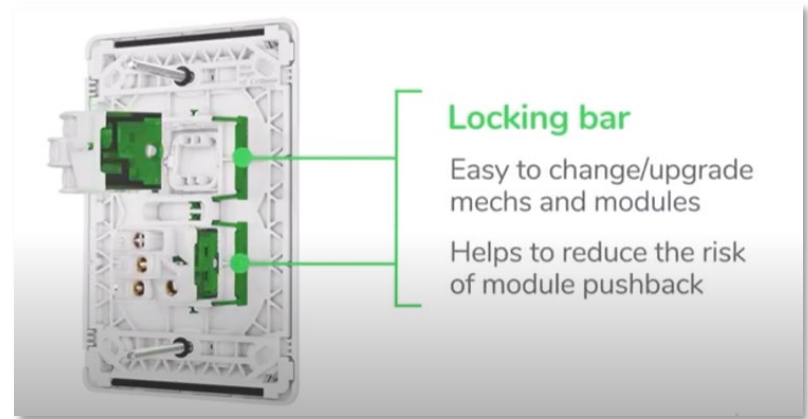
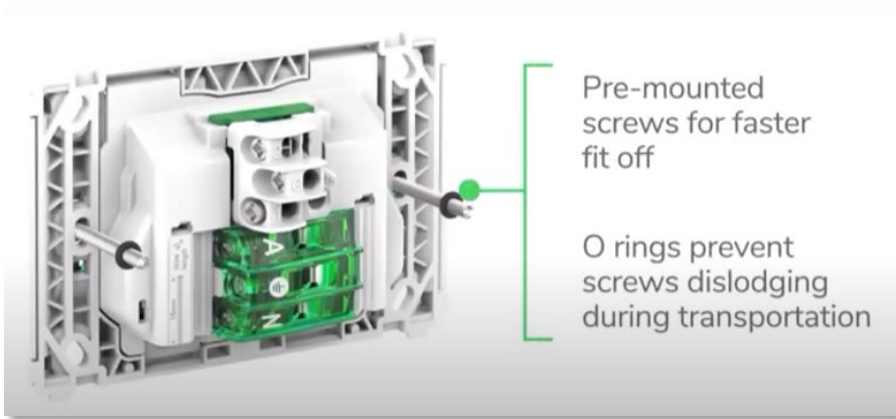
Deflects Impacts

Bevelled edge design

Shuttered Sockets

Internal shutters close off the pin apertures when a plug is removed

Pro Series – Easy installation



Pro Series – Range overview

Sockets & Switches

Skins in white and black



USB charger

Twin socket and module



Network Connectivity

Data, AV



Socket RCDs

10mA



Electronic modules

Scheduler, Timer, Dimmer, Sensor



SpaceLogic C-Bus

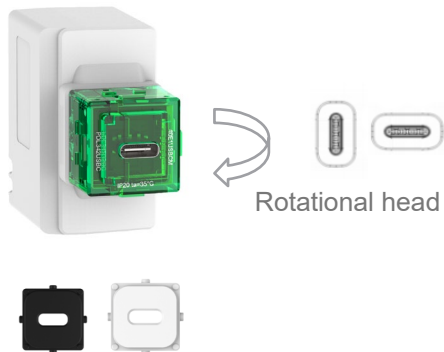
Input modules



Pro Series – USB Fast Charger

PDL342USBC-VW USB Fast Charger Module

- PD3.0, 25W, Type C
- Cap in white included in module packaging
- Cap in black: 40E1USBCCAP-BK



Option to install in socket outlets



Twin socket (vertical, horizontal)

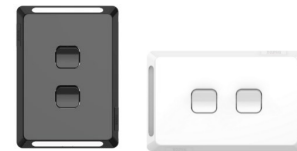


Single or Quad Socket (horizontal)

Option to install in switch plates



1-Gang (vertical, horizontal)



2-Gang (vertical, horizontal)

Pro Series – Network connectivity

40RJ45SMA6(A)C Data jack

- Colour options are black white or translucent



PDL315HDMI-TN HDMI Jack

- Colour options are black white or translucent



Pro Series – Cooker switch and accessories

PDLP347VH-XW Cooker Switch

- 250V, 45A Cooker Switch
- Single or Double Pole



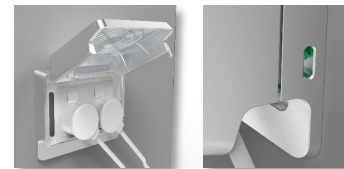
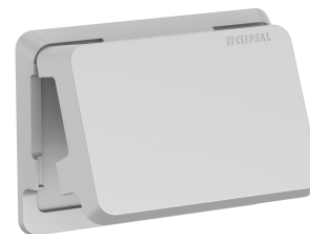
PDLP3TOOL Skin Removal Tool

- Used when there is limited access below the socket or switch



PDLP223H-3A Heavy duty accessory

- IK10 (4x more resistant)
- Lockable (screwdriver operated)



Pro Series – Specific socket outlets

PDLP395H4(XXUA) **Quad socket outlet**

- 250V, 10A Quad Switched Socket
- With or without an extra switch



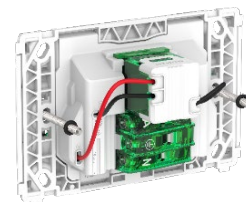
PDLP395-15 **15A Twin socket outlet**

- 250V, 15A Twin Switched Socket outlet



PDLP395PI **Twin socket with LED**

- 250V, 10A Twin Switched Socket with LED Indicator



Pro Series – Specific modules and inserts

PDLP381ALR

Rocker with locking feature

- Prevent accidental switching
- Locks in OFF position



PDL310ML(PA)

LED indicator module

- 250V or 24V
- GN, RD & AM



PDLP300ALEDB

Bright LED

- White LED for better visibility
- Comes with rocker in XW or BK



Questions

Name one feature unique to the Pro Series in the PDL/Clipsal lineup?

- Either:
 - Circuit ID Windows
 - Secure Skin
 - Angled skin

Life Is On

Schneider
Electric