



Drives 2025

Cherise Tabbiner

Motor Management solutions

Direct online



Soft Starter



Variable Speed Drive



- Technical**
- + Adapted for small load then Star/delta
 - Power supply fluctuation
 - Stress on mechanics and hydraulics
 - Limited integration in automation
 - No adaptation to process requirements (fixed speed)

- + Limited inrush current
- + Stress-less for mechanics and hydraulics (torque control)
- + integration in automation
- No adaptation to process requirements (fixed speed)

- + Performance (torque and speed)
- + Adaption to process requirements
- + Integration in Automation
- Harmonics
- EMC (HF conducted & radiated emission)

- Economical**
- + Lowest in CAPEX for small load
 - Star Delta more expensive (2 contactors + 6 power cables)
 - Transformer oversizing to limit voltage drop

- + Low CAPEX
- Limited oversizing of transformer

- Higher CAPEX (product, shielded cables...)
- + Energy savings
- + Incentives according to countries / application
- + Transformer oversizing due to harmonics

Drives portfolio overview

Low Voltage Drives Products

Low & Medium Voltage Systems

Digital Tools



Soft Starter



Altivar Soft Starters



Buildings



Altivar Building



Machines



Altivar Machine



Wall Mounted



Modular



Altivar Process



LV Systems



MV Systems

200-690V
Power rating: 0.75 KW to 2.6 MW

2.4 – 13,8 kV
Power rating: 0.2 MW to 20 MW

Motor Control Configurator

Motor Management Design

Altivar Efficiency Calculator

LV Drive Systems Configurator

SoMove

EcoStruxure Asset Advisor

Drives Lifecycle Services

Consulting & Auditing

Installation & Commissioning

Modernization & Revitalisation

Spare Parts & Repair

Training & Support

Maintenance

Advanced Services

Altivar Drives & Soft Starter Portfolio

LV Drives

MV Drives



Soft Starter

Machine



Altistart 01

0.37...15kW
110...480V



Altivar Soft Starter ATS130

11...55kW
200...480V



Altistart 22

17...590A
208...600V



Altivar Soft Starter ATS430

17...590A
208...690V

Process



Altivar Soft Starter ATS490

17...1200A
208...690V



Machines

Basic Applications



ATV12

0.18...4kW
100...240V

Simple Applications



Altivar 320
Book format

0.18...15kW
200...600V



Altivar 320/Solar
Compact format

0.18...22kW
200...600V

Advanced Application



Altivar 340
Book format

0.18...75kW
200...480V



Building

HVAC



ATV212

0...75kW
200...480V



Process

Process Utilities



ATV600

IP21 | IP55
0.75...1200kW
200...690V



Process Heavy Industrial



ATV900

IP21 | IP55
0.75...1200kW
200...690V



Process Utilities



ATV6000

IP21 | IP43
315...2000kW
2.4...13.8 kV

How do I select? Basic information

Motor nameplate details: kW, Current, Volts, RPM, Hz

- VSD rating in kW is for standard 4-pole motor. The VSD continuous output current should be greater than motor rated current
- Special motors: Submersible bore pumps, open frame, high ambient, high speed, old or not inverter rated

Type of load (pump, fan, compressor, conveyor, hoist etc)

Installation site: heavy industrial, water utility, building, compact machine

Environmental conditions (clean or water/dust is present), wall or enclosure mounted, ambient temperature e.g. above 40°C or below 0 °C

Note specific application and control requirements e.g:

- Communication, Safety, Application Functions (eg: pump management)

DOL, VSD & Soft starter enquiry form

Life Is On		Schneider Electric	
Quick VSD and Soft Starter Enquiry Form			
Contact details:			
Name: _____	Phone: _____		
Email: _____	Branch/representative: _____		
Date: _____	Company: _____		
Motor details (3-ph AC motor):		Supply details:	
kW: _____ kW	Voltage: _____ V		
Current: _____ A	Phases: <input type="checkbox"/> 1-ph <input type="checkbox"/> 3-ph		
Voltage: _____ V	Harmonics specified: _____ THDi%		
Frequency: _____ Hz	Generator supply: _____ kVA		
Motor control type:			
Variable speed drive: <input type="checkbox"/>	Soft starter: <input type="checkbox"/>		
Preferred model: _____			
Application Details:			
Pump (centrifugal): <input type="checkbox"/>	Crane / hoist: <input type="checkbox"/>		
Fan: <input type="checkbox"/>	Crusher / grinder: <input type="checkbox"/>		
Compressor: <input type="checkbox"/>	Submersible pump: <input type="checkbox"/> (borehole)		
Conveyor: <input type="checkbox"/>	Other: <input type="checkbox"/>		
Other application details: _____			

Environment:		Ambient Temperature:	
Clean: <input type="checkbox"/> IP20/IP21	Above 40°C: <input type="checkbox"/>		
Dust or moisture: <input type="checkbox"/> IP54/IP55	Below 10°C: <input type="checkbox"/>		

- All the basic details to get started
 - Motor details
 - Supply
 - Application
 - Environment

Digital Tools for Motor Management

- Product Selector

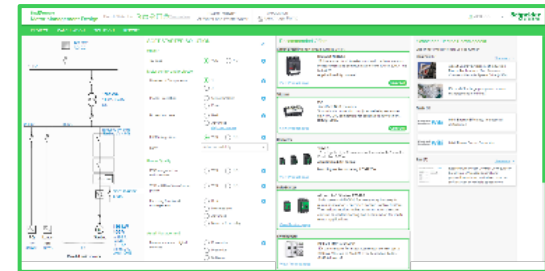
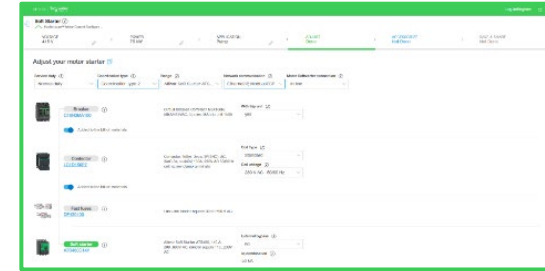
Get the commercial reference and its options

- Motor Control Configurator for your application

Get the complete Motor Starter solution in 2 minutes

- Motor Management Design for your project

- Dedicated to expert and engineer
- Compare and select the motor starter solution
- Energy efficiency ROI calculator



YouTube Playlists - How to videos

How to: Altivar Soft Starters



40 videos



<https://youtube.com/playlist?list=PLa7UGrWOTyjmoXYQk91jbn01VFDXnPakF>

How to: Altivar Machine ATV320



32 videos



<https://youtube.com/playlist?list=PLa7UGrWOTyjkmuiHyakGthhIvucpha0lY>

How to: Altivar Process ATV600/ATV900



69 videos



<https://youtube.com/playlist?list=PLa7UGrWOTyjmBTYNYk6M6UbPAP1iMsDB>

How to: Altivar Machine ATV340



25 videos



https://youtube.com/playlist?list=PLa7UGrWOTyjkBmZ2gvxG0W6RjIsg_JY-

How to: Altivar Building ATV212



25 videos



<https://youtube.com/playlist?list=PLa7UGrWOTyjk6JInvZOCvHb14iYjVlHh>

Life Is On

Schneider
Electric

Life Is On | **Schneider**
Electric

se.com

